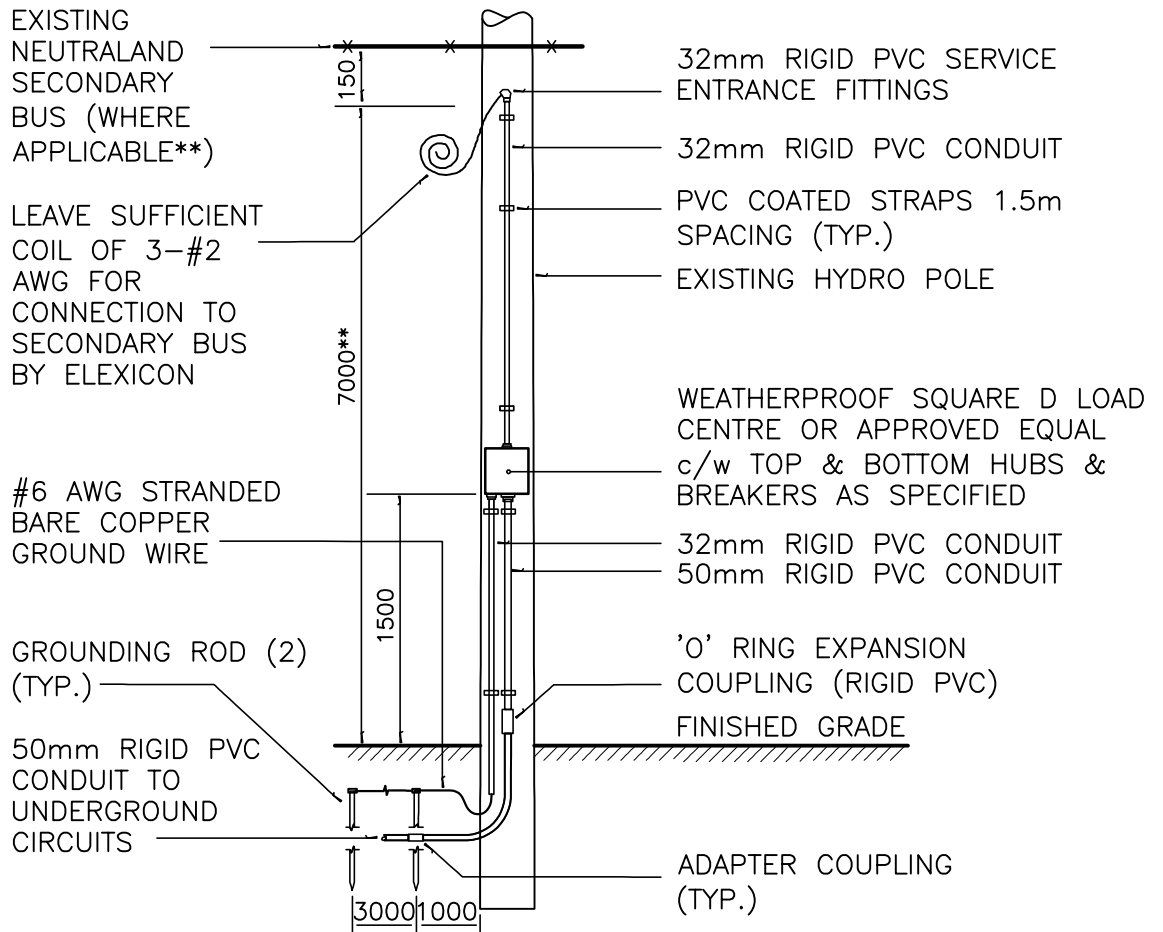


SUPPLY CONTROL CABINET ASSEMBLY 120/240v, 1Ø, 3W

| DESCRIPTION | CCT NO. | BKR AMPS | CCT LOAD | CCT LOAD | BKR AMPS | CCT NO. | DESCRIPTION |
|-----------------------|---------|----------|----------|----------|--|---------|-----------------------|
| LIGHTING* (3x180W) | 1 | 30 | 540W | 540W | 30 | 2 | LIGHTING* (3x180W) |
| LIGHTING* (4x180W) | 3 | 30 | 720W | 540W | 30 | 4 | LIGHTING* (3x180W) |
| SPARE | 5 | 30 | - | 360W | 30 | 6 | LIGHTING* (2x180W) |
| SPARE | 7 | 30 | - | 180W | 30 | 8 | LIGHTING* (1x180W) |
| TOTAL WATTAGE | | | 2880W | | *IN LOAD TABLE LED DRIVER LOSSES ARE INCLUDED | | |



NOTES:

1. CONTRACTOR SHALL CO-ORDINATE INSTALLATION OF PROPOSED POWER SUPPLY ON EXISTING HYDRO POLES WITH ELEXICON ENERGY, GIVING TWO WEEKS ADVANCE NOTICE AND INCORPORATING ANY MINOR CHANGES REQUIRED.
2. FINAL CONNECTION OF INCOMING POWER SUPPLY SHALL BE COMPLETED BY ELEXICON ENERGY.
3. MOUNTING DETAILS TYPICAL ONLY AND MAY BE ADAPTED TO SUIT SITE CONDITIONS AND/OR ELEXICON ENERGY REQUIREMENTS.

| | | | |
|-------------------------|---|---------------------------------|--|
| City of Pickering | | Engineering Services Department | |
| DRAWN D. POLAK | TYPICAL POWER SUPPLY INSTALLATION DETAIL | REVISION NO. | |
| APPROVED P. HELGESEN | | DATE | |
| DATE DECEMBER 2019 | | P-1205 | |