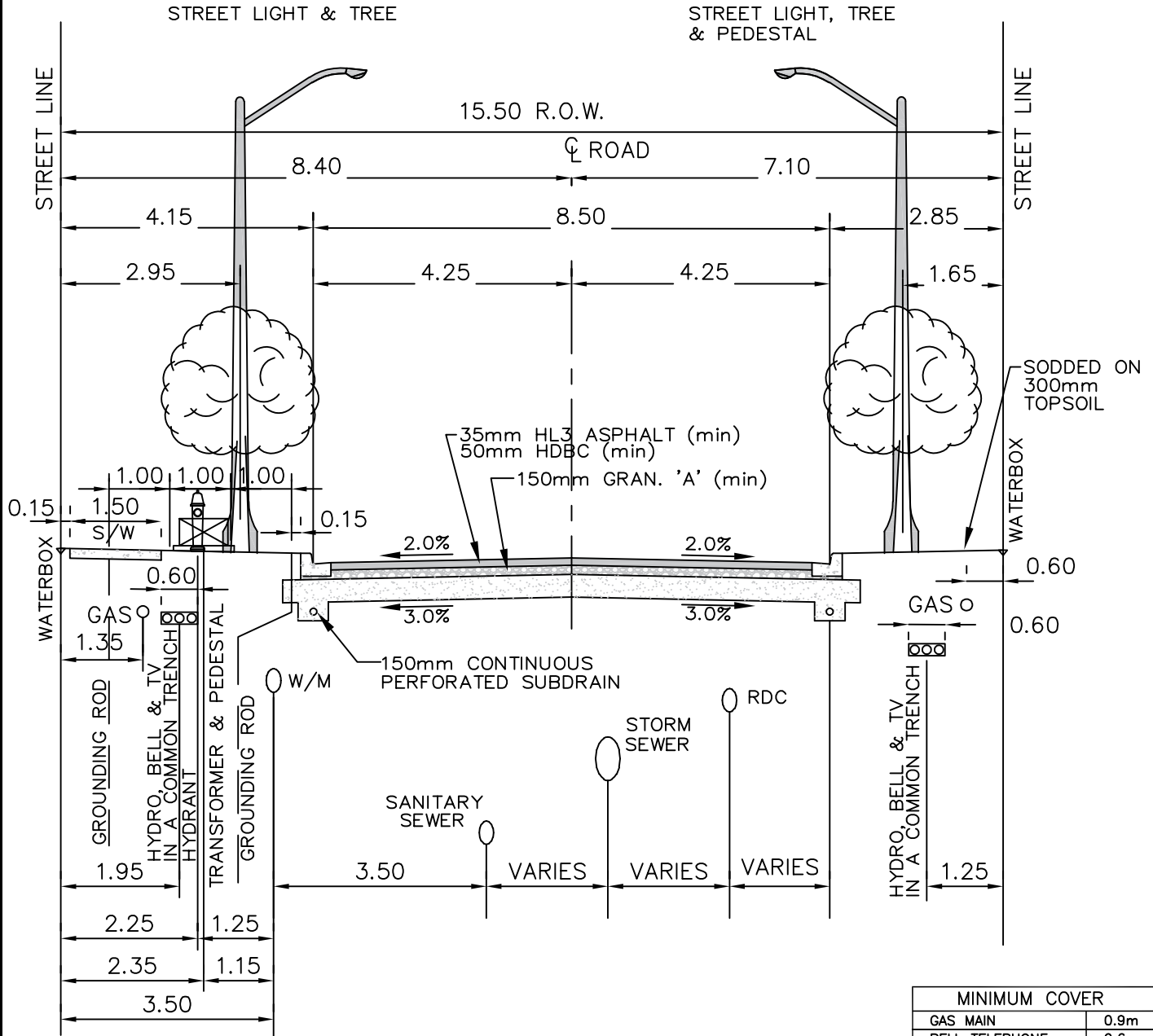


NOTES:

HYDRO TRENCH IS TO DEVIATE AROUND THE STREETLIGHT LOCATION. CENTRELINE OF THE HYDRO TRENCH AT THE STREETLIGHT LOCATION IS TO BE OFFSET 0.95m.



All dimensions are in metres unless otherwise noted.

City of Pickering		Engineering Services Department	
DRAWN J. BARKER	TYPICAL CROSS-SECTION 15.50m ROAD ALLOWANCE 8.5m PAVEMENT		REVISION NO. 1
APPROVED R. STARR			DATE OCTOBER 2019
DATE SEPTEMBER 2010			P-731DH