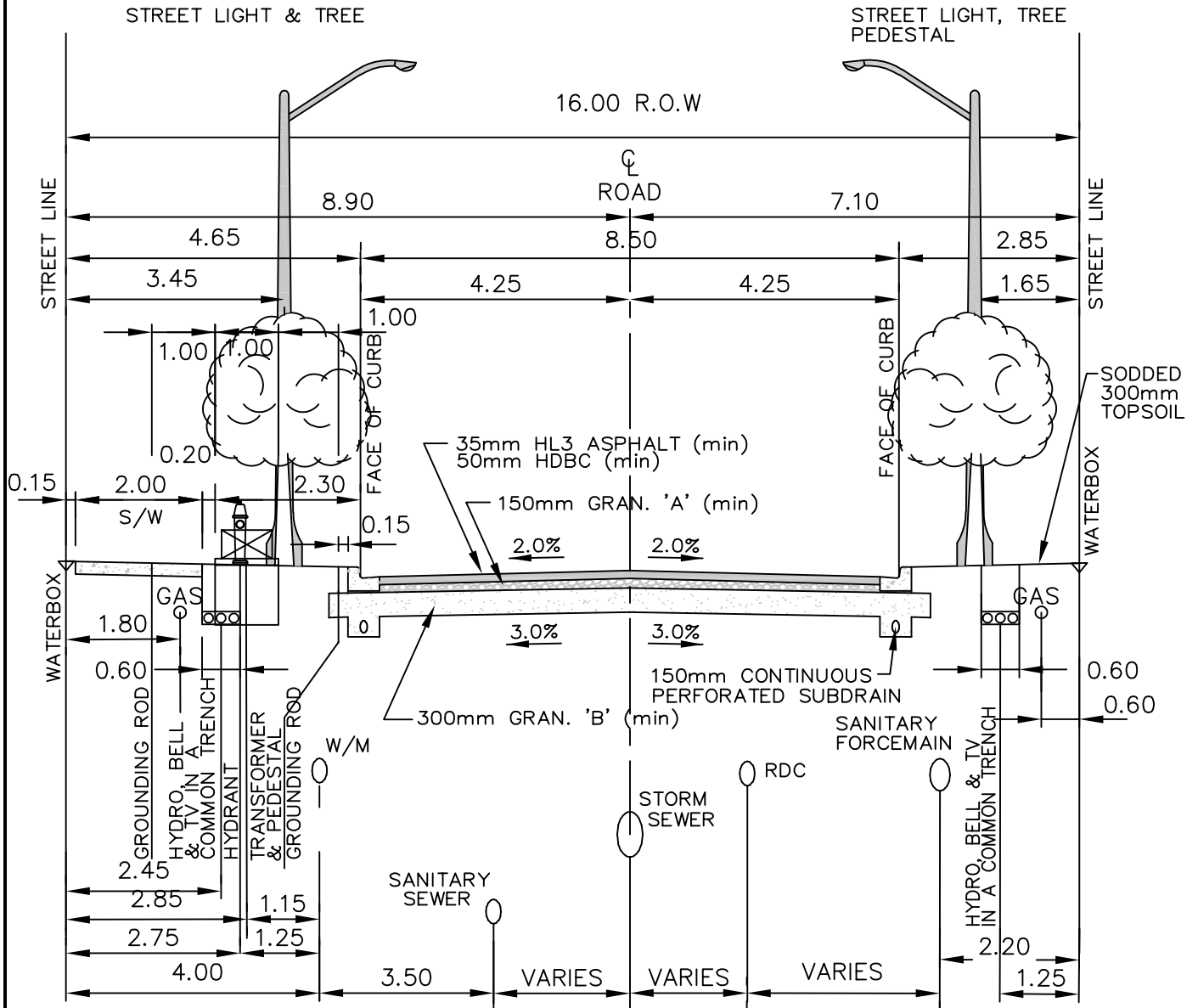


**NOTES:**

HYDRO TRENCH IS TO DEVIATE AROUND THE STREET LIGHT LOCATION. CENTRELINE OF THE HYDRO TRENCH AT THE STREET LIGHT LOCATION IS TO BE OFFSET 0.95m.



MINIMUM COVER	
GAS MAIN	0.9m
BELL TELEPHONE	0.6m
BELL CONDUIT	0.6m
HYDRO	0.6m
CABLE TELEVISION	0.6m
STORM SEWER	1.8m
RDC	1.8m
SANITARY SEWER	2.5m
WATERMAIN	1.8m

All dimensions are in metres unless otherwise noted.

City of Pickering		Engineering Services Department	
DRAWN J. BARKER	<b>TYPICAL CROSS-SECTION</b> <b>16.0m ROAD ALLOWANCE 8.5m PAVEMENT</b>		REVISION NO. 1
APPROVED R. STARR			DATE OCTOBER 2019
DATE SEPTEMBER 2010			P-732DH