

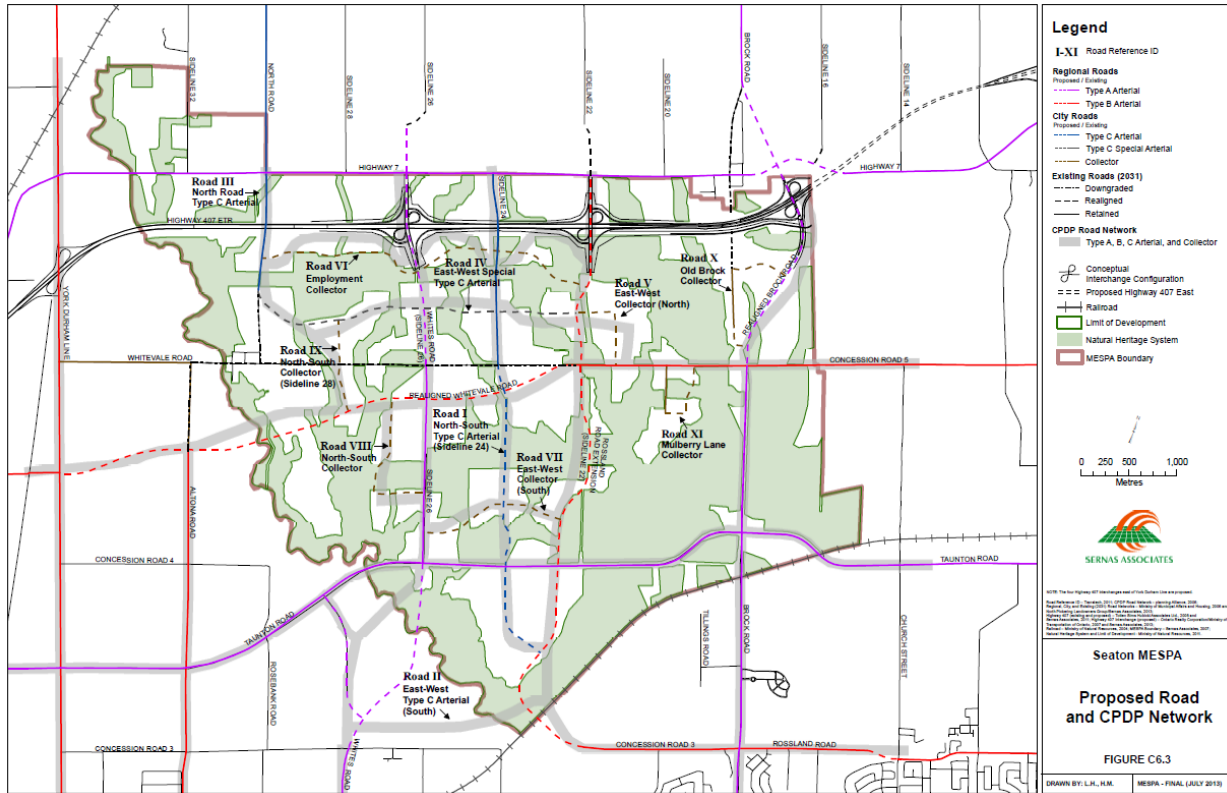
# **Appendix 4**

## **Seaton Roads (Phases 3-4) Class EA Study**

### **Section 4, Alternative Design Concepts**

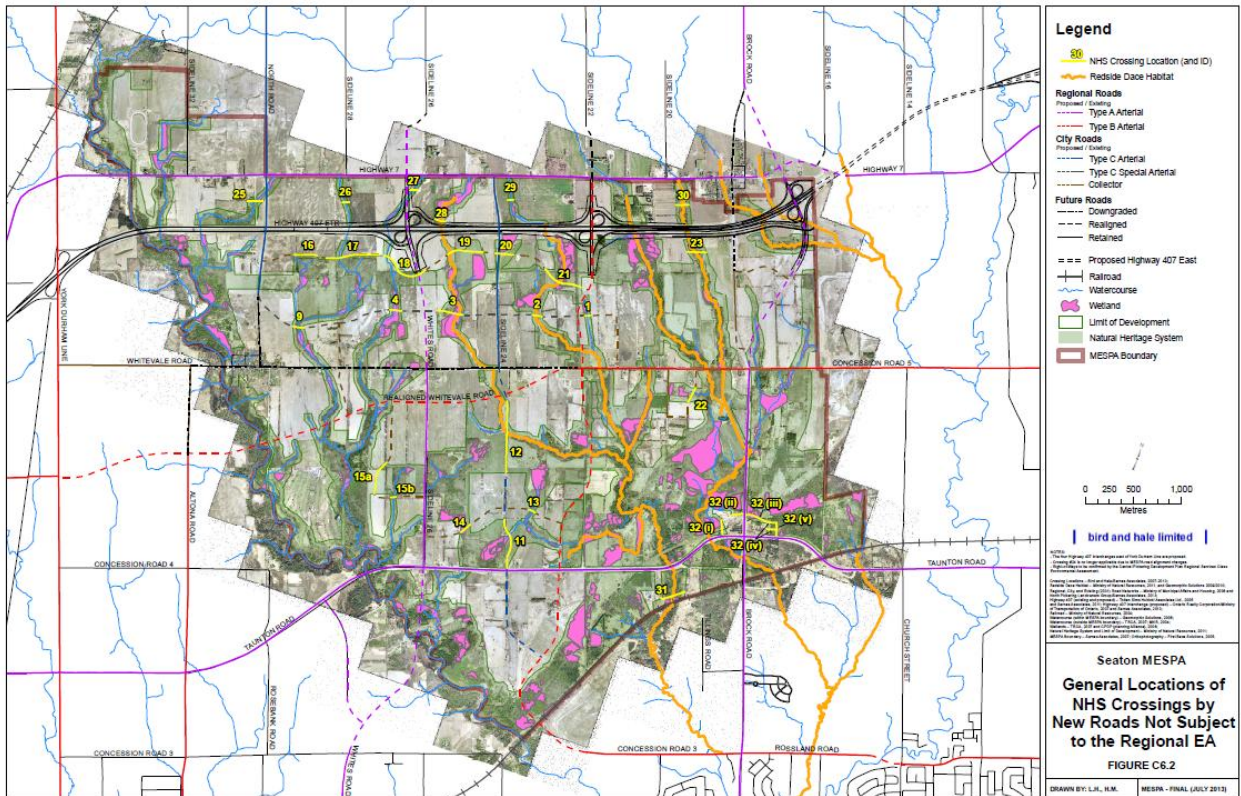
# Appendix 4 – Alternative Design Concepts Figures

## Figure 4.1: MESPA Recommended Seaton Road Network

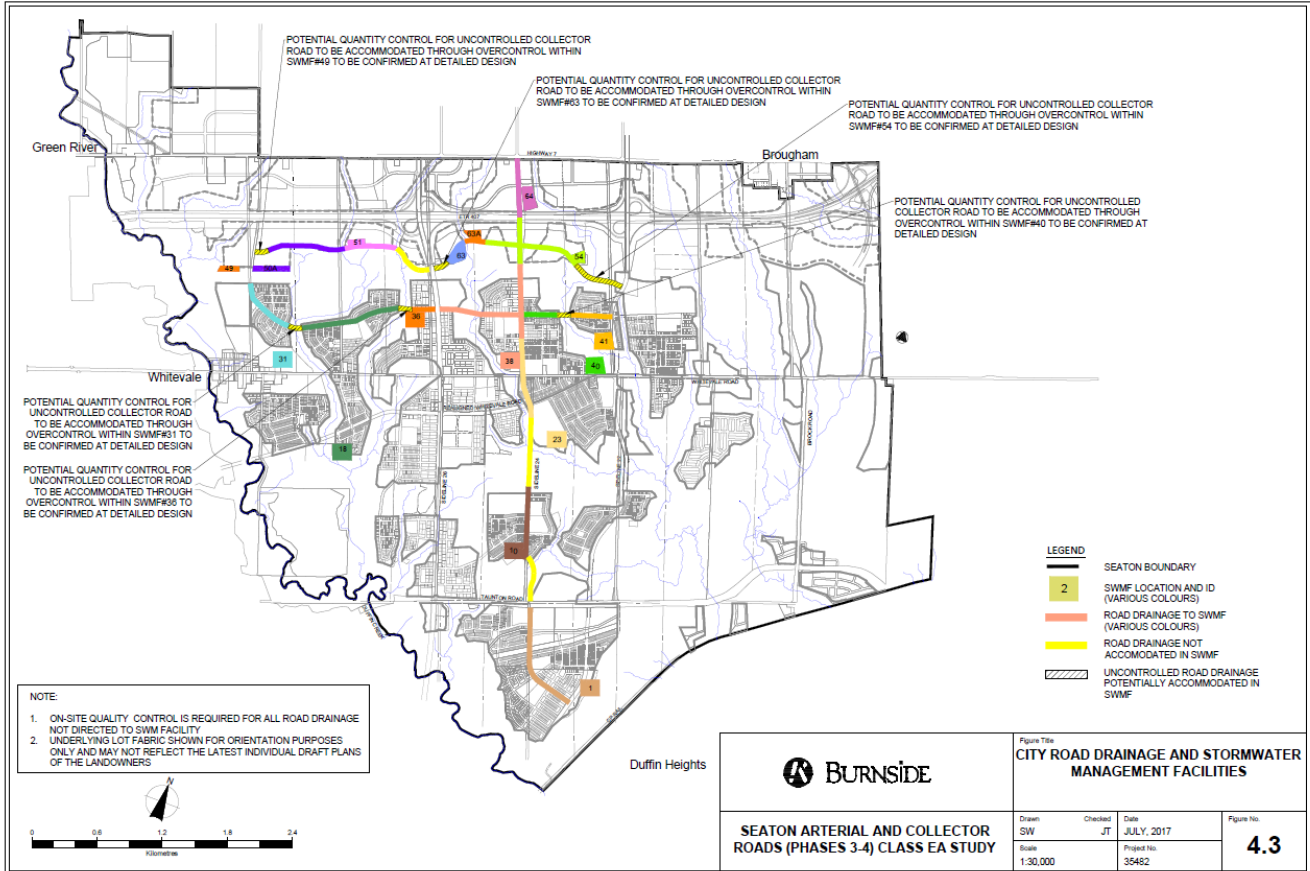


# Appendix 4 – Alternative Design Concepts Figures

## Figure 4.2: NHS Crossings of Non-Regional Roads



# Appendix 4 – Alternative Design Concepts Figures



## **Appendix 4, Alternative Design Concepts**

### Arterial Alternative Design Concepts – Options:

A1 – with 2 through lanes (one in each direction)

B1 and B-2 – with 4 through lanes (two in each direction)

C1, C2, C3 and C4 – with 2 through lanes (one in each direction)

### Collector Alternative Design Concepts – Options:

A1 and A2– with 2 through lanes (one in each direction)

B1 and B2 – with 2 through lanes (one in each direction) with wider (4.25m) lanes