

1. Copyright of this drawing is reserved by the Architect. The drawing and all associated documents are the intellectual property of the Architect. The drawing and all information contained therein may not be reproduced in whole or in part without prior written permission of the Architect.
 2. These Contract Documents are the property of the Architect. The Architect bears no responsibility for the interpretation of these documents by the Contractor. Upon written application, the Architect will provide written graphic clarification or supplementary information regarding the intent of the Contract Documents. The Architect will review Shop Drawings submitted by the Contractor for design conformance only.
 3. Drawings are not to be used for construction. The Contractor is to verify all existing conditions and dimensions required to perform the work and report any discrepancies with the Contract Documents to the Architect before commencing any work.
 4. Portions of approved finished mechanical or electrical devices, fittings, and fixtures are indicated on architectural drawings. The locations shown on the architectural drawings govern over the Mechanical and Electrical drawings. These items not clearly located will be located as directed by the Architect.
 5. These drawings are not to be used for construction unless noted below as "Issuance for Construction".
 6. All work to be carried out in conformance with the Code and Rules of the authority having jurisdiction.
 7. The Architect of these plans and specifications gives no warranty or representation to any party about the constructability of the building(s) represented by these. All contractors or subcontractors must verify dimensions when bidding and at all times ensure that they can properly construct the work represented by these plans.
- © architectalliance, 2017

aA

205-317 Adelaide St. West
 Toronto, Ontario M5V 1P9
 t 416 599 6000
 f 416 593 4911
 info: architectalliance.com

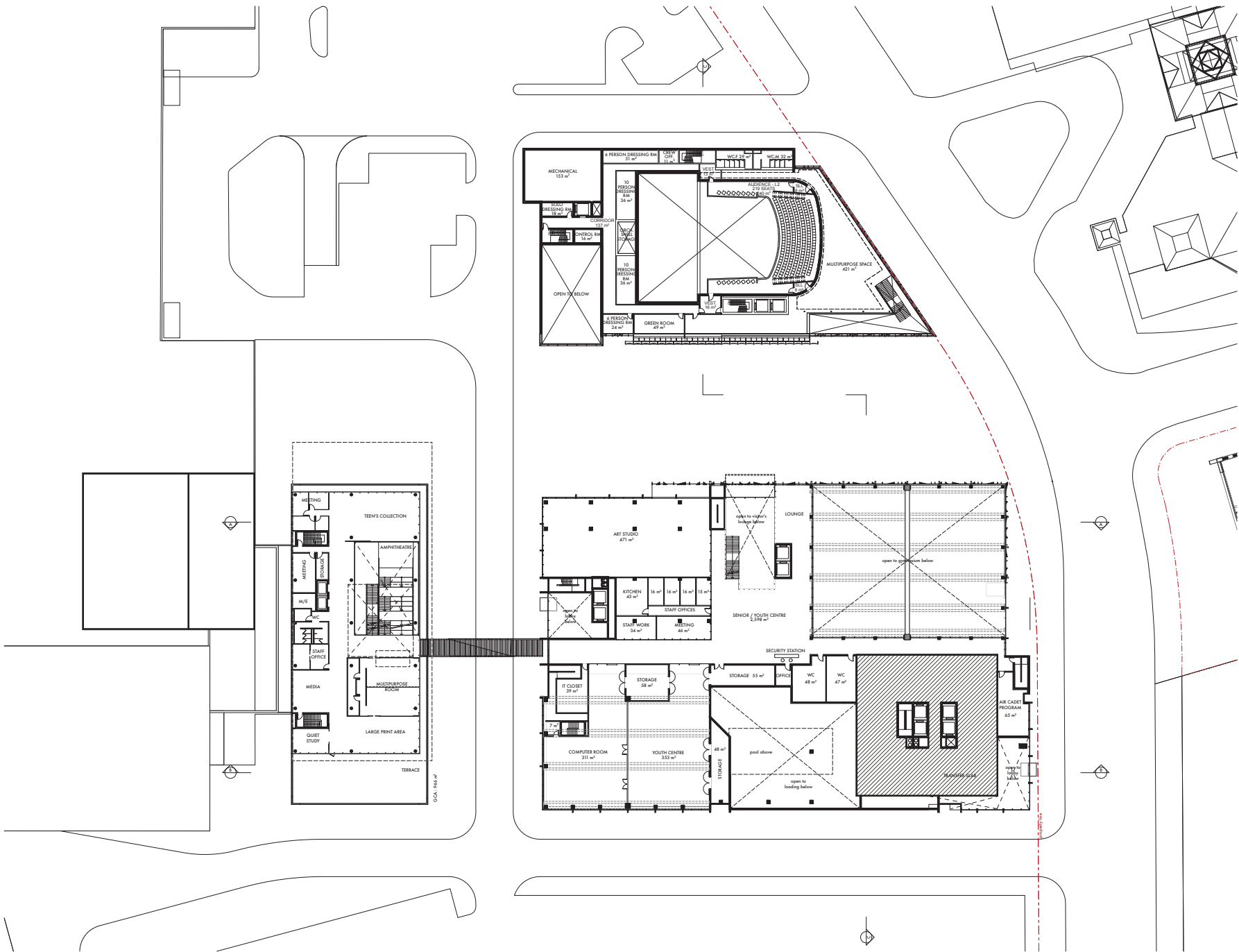


**PICKERING TOWN CENTRE
 PHASE 1**
 - Cushman & Wakefield
 - City of Pickering

GROUND FLOOR

1:300
 2019-06-21

A-015



1. Copyright of this drawing is reserved by the Architect. The drawing and all associated documents are an instrument of service by the Architect. The drawing and the information contained therein may not be reproduced in whole or in part without prior written permission of the Architect.
2. These Contract Documents are the property of the Architect. The Architect bears no responsibility for the interpretation of these documents by the Contractor. Upon written application, the Architect will provide written graphic clarification or supplementary information regarding the intent of the Contract Documents. The Architect will review Shop Drawings submitted by the Contractor for design conference only.
3. Drawings are not to be scaled for construction. The Contractor is to verify all existing conditions and dimensions required to perform the work and report any discrepancies with the Contract Documents to the Architect before commencing any work.
4. Portions of exposed finished mechanical or electrical devices, fittings, and fixtures are indicated on architectural drawings. The locations shown on the architectural drawings govern over the Mechanical and Electrical drawings. These items not clearly located will be located as directed by the Architect.
5. These drawings are not to be used for construction unless noted below as "Issuance For Construction".
6. All work is to be carried out in conformance with the Code and Bylaws of the authority having jurisdiction.
7. The Architect of these plans and specifications gives no warranty or representation to any party about the completeness of the building(s) represented by these. All contractors or subcontractors must satisfy themselves when bidding and at all times ensure that they can properly construct the work represented by these plans.

© architectalliance, 2017

aA

205-317 Adelaide St. West
 Toronto, Ontario M5V 1P9
 t 416 593 6500
 f 416 593 4911
 info: architectalliance.com



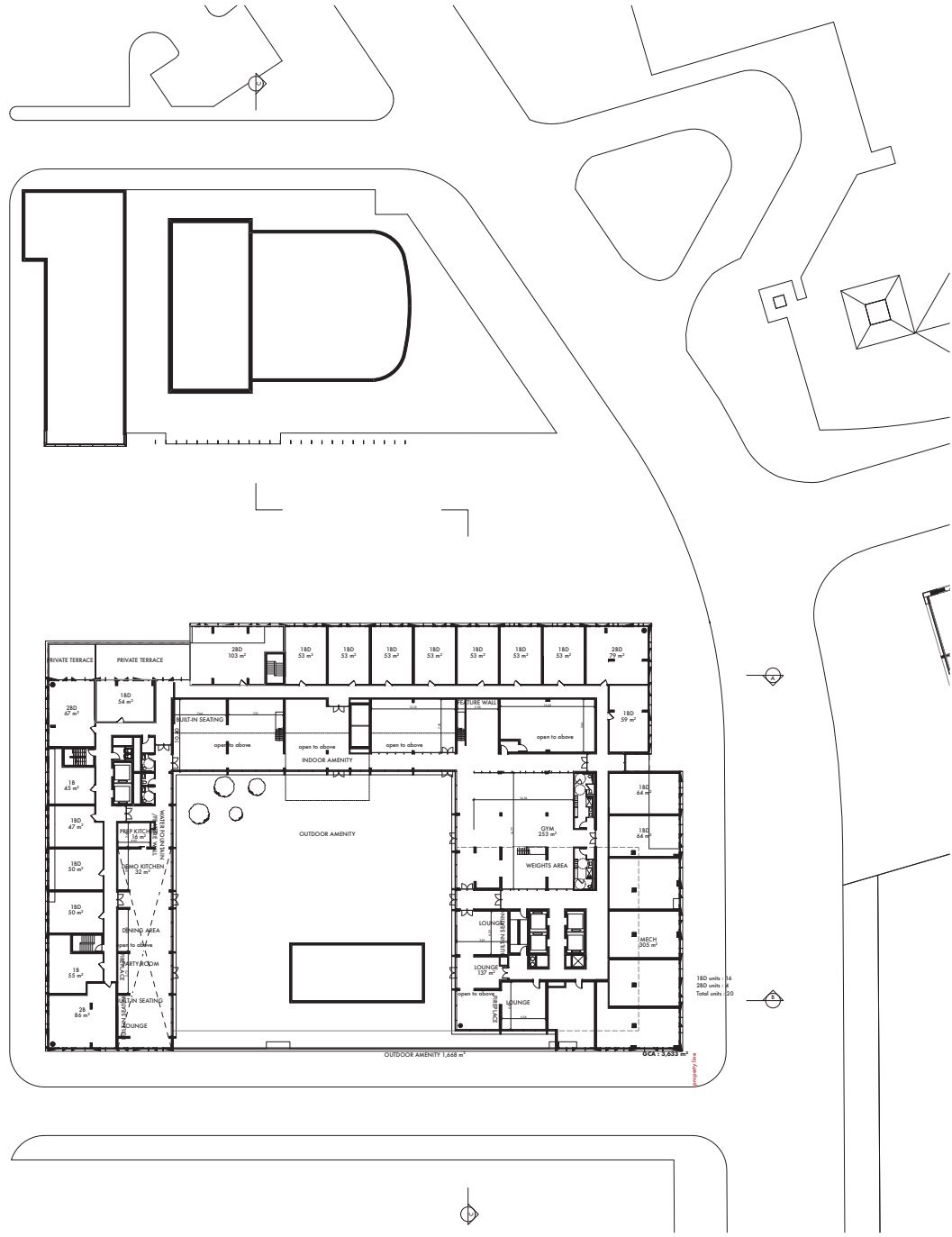
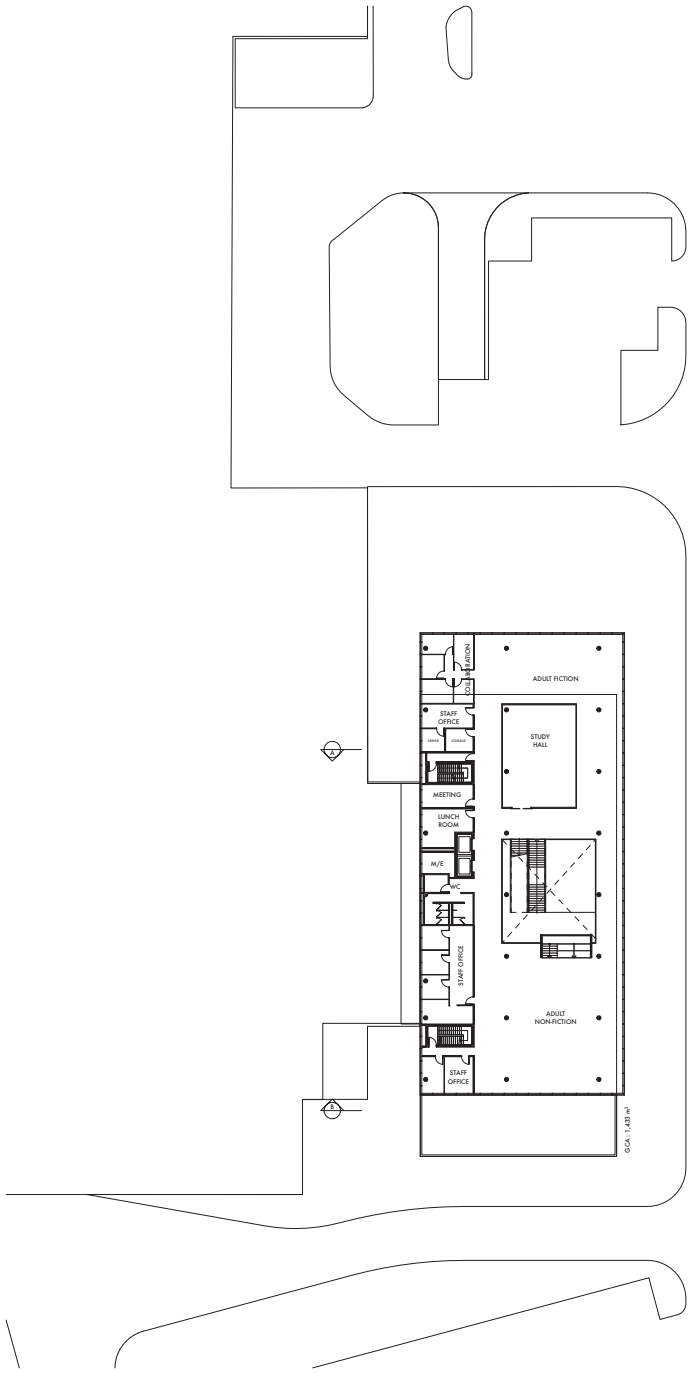
**PICKERING TOWN CENTRE
 PHASE 1**
 - Cushman & Wakefield
 - City of Pickering

L2

1:300

2019-06-21

A-016



1. Copyright of this drawing is reserved by the Architect. The drawing and all associated documents are an instrument of service by the Architect. The drawing and the information contained therein may not be reproduced in whole or in part without prior written permission of the Architect.
 2. These Contract Documents are the property of the Architect. The Architect bears no responsibility for the interpretation of these documents by the Contractor. Upon written application, the Architect will provide written graphic clarification or supplementary information regarding the intent of the Contract Documents. The Architect will review Shop Drawings submitted by the Contractor for design confirmation only.
 3. Drawings are not to be scaled for construction. The Contractor is to verify all existing conditions and dimensions required to perform the work and report any discrepancies with the Contract Documents to the Architect before commencing any work.
 4. Portions of exposed finished mechanical or electrical devices, fittings, and fixtures are indicated on architectural drawings. The locations shown on the architectural drawings govern over the Mechanical and Electrical drawings. These items not clearly located will be located as directed by the Architect.
 5. These drawings are not to be used for construction unless noted below as "Issuance For Construction".
 6. All work is to be carried out in accordance with the Code and Bylaws of the authority having jurisdiction.
 7. The Architect of these plans and specifications gives no warranty or representation to any party about the constructability of the buildings represented by these. All contractors or subcontractors must satisfy themselves when bidding and at all times ensure that they can properly construct the work represented by these plans.
- © architectAlliance, 2017

aA

205-317 Adelaide St. West
 Toronto, Ontario M5V 1P9
 1 416 593 6500
 F 416 593 4911
 info: architectalliance.com



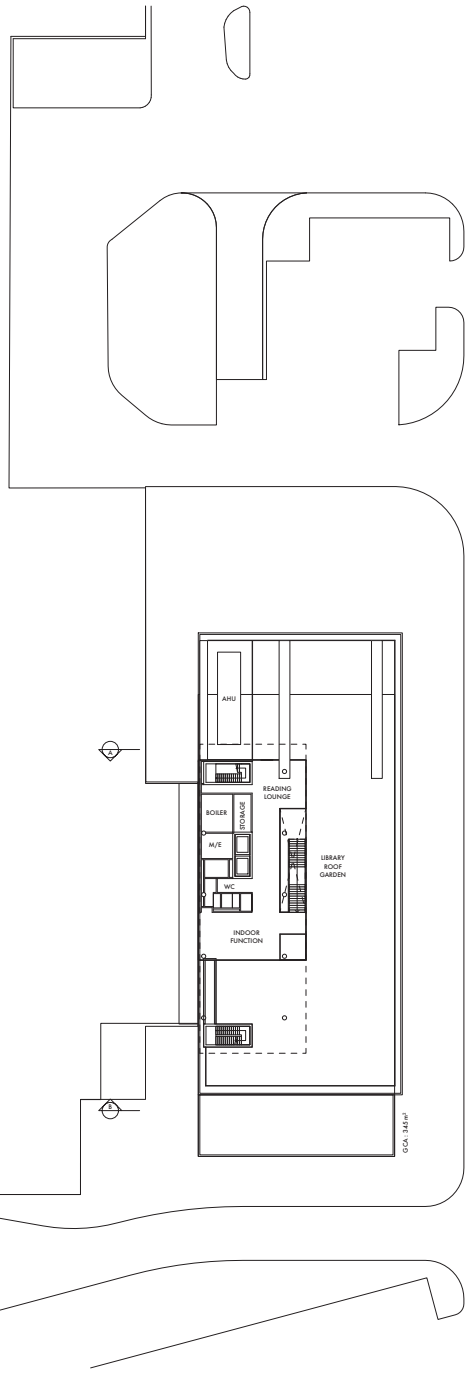
**PICKERING TOWN CENTRE
 PHASE 1**
 - Cushman & Wakefield
 - City of Pickering

L3

1:300

2019-06-21

A-017



1. Copyright of this drawing is reserved by the Architect. The drawing and all associated documents are an instrument of service by the Architect. The drawing and the information contained therein may not be reproduced in whole or in part without prior written permission of the Architect.
2. These Contract Documents are the property of the Architect. The Architect bears no responsibility for the interpretation of these documents by the Contractor. Upon written application, the Architect will provide written graphic clarification or supplementary information regarding the intent of the Contract Documents. The Architect will review Shop Drawings submitted by the Contractor for design conference only.
3. Drawings are not to be scaled for construction. The Contractor is to verify all existing conditions and dimensions required to perform the work and report any discrepancies with the Contract Documents to the Architect before commencing any work.
4. Portions of approved finished mechanical or electrical devices, fittings, and fixtures are indicated on architectural drawings. The locations shown on the architectural drawings govern over the Mechanical and Electrical drawings. These items not clearly located will be located as directed by the Architect.
5. These drawings are not to be used for construction unless noted below as "Issuance For Construction".
6. All work is to be carried out in conformance with the Code and Bylaws of the authority having jurisdiction.
7. The Architect of these plans and specifications gives no warranty or representation to any party about the constructability of the buildings represented by them. All contractors or subcontractors must satisfy themselves when bidding and at all times ensure that they can properly construct the work represented by these plans.

© architectalliance 2017

aA

205-317 Adelaide St. West
 Toronto, Ontario M5V 1P9
 T 416 593 6500
 F 416 593 4911
 info: architectalliance.com



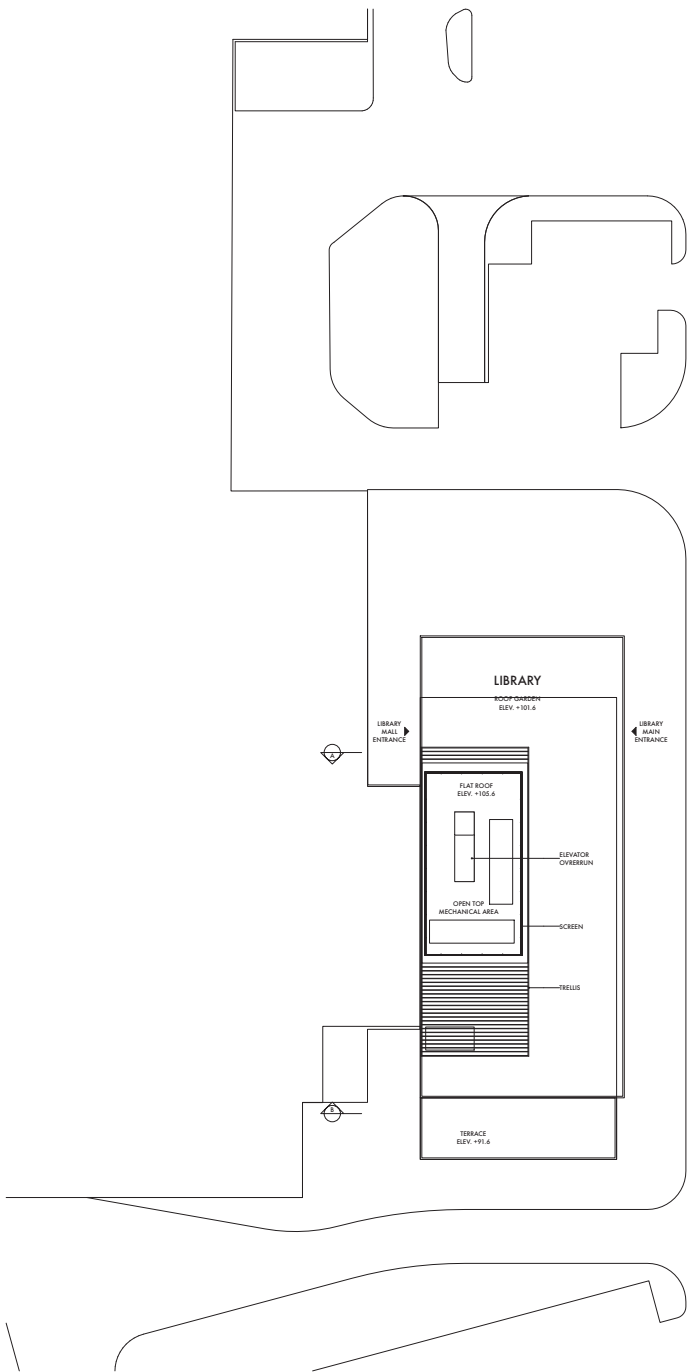
**PICKERING TOWN CENTRE
 PHASE 1**
 - Cushman & Wakefield
 - City of Pickering

L4

1:300

2019-06-21

A-018



1. Copyright of this drawing is reserved by the Architect. The drawing and all associated documents are an instrument of service by the Architect. The drawing and the information contained therein may not be reproduced in whole or in part without prior written permission of the Architect.
 2. These Contract Documents are the property of the Architect. The Architect bears no responsibility for the interpretation of these documents by the Contractor. Upon written application, the Architect will provide written graphic clarification or supplementary information regarding the intent of the Contract Documents. The Architect will review Shop Drawings submitted by the Contractor for design conference only.
 3. Drawings are not to be used for construction. The Contractor is to verify all existing conditions and dimensions required to perform the work and report any discrepancies with the Contract Documents to the Architect before commencing any work.
 4. Portions of exposed finished mechanical or electrical devices, fittings, and fixtures are indicated on architectural drawings. The locations shown on the architectural drawings govern over the Mechanical and Electrical drawings. These items not clearly located will be located as directed by the Architect.
 5. These drawings are not to be used for construction unless noted below as "Issued For Construction".
 6. All work is to be carried out in conformance with the Code and Bylaws of the authority having jurisdiction.
 7. The Architect of these plans and specifications gives no warranty or representation to any party about the constructability of the buildings represented by them. All contractors or subcontractors must satisfy themselves when bidding and at all times ensure that they can properly construct the work represented by these plans.
- © architectAlliance, 2017

aA

205-317 Adelaide St. West
 Toronto, Ontario M5V 1P9
 1 416 593 6500
 F 416 593 4911
 info: architectalliance.com



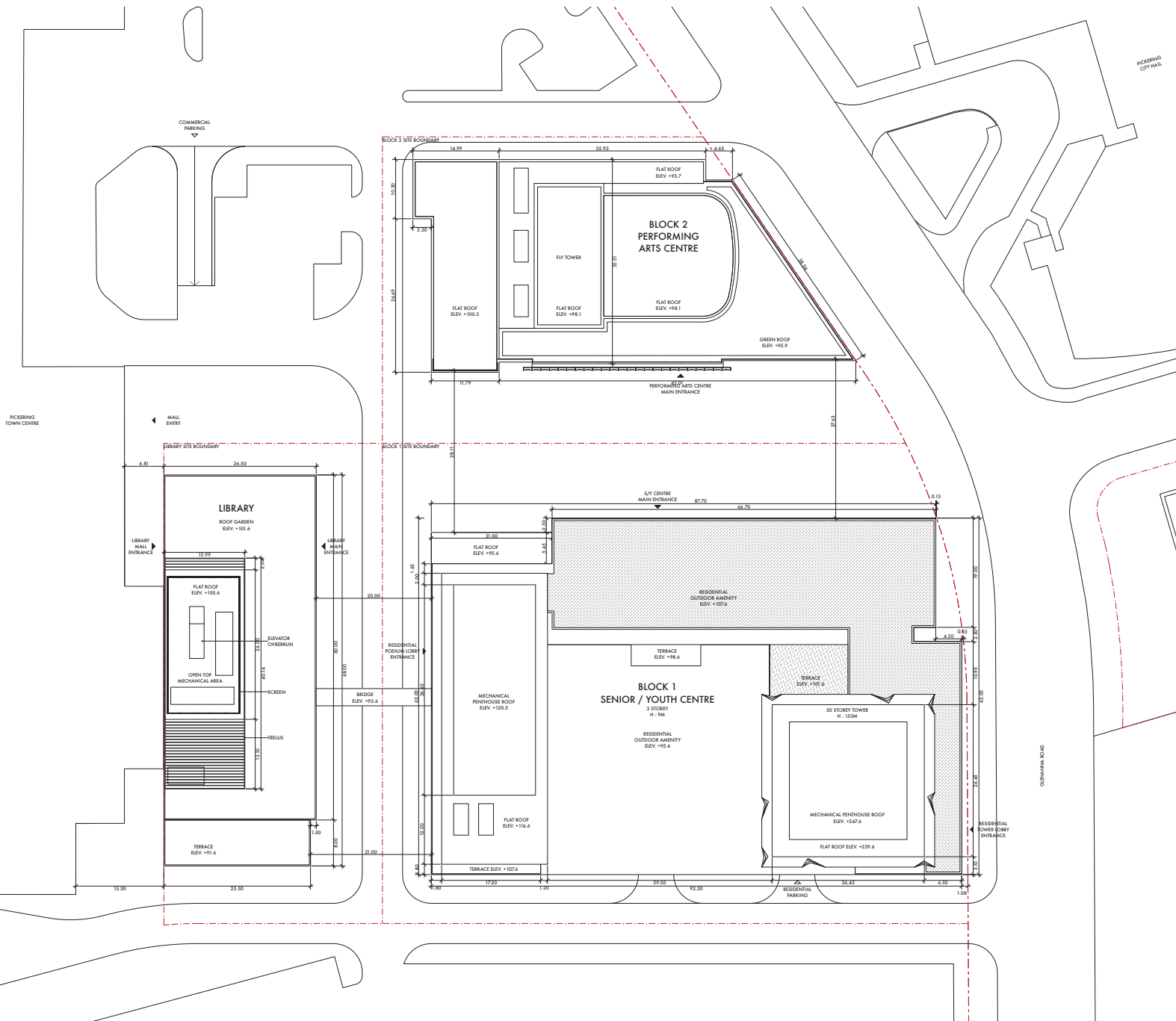
**PICKERING TOWN CENTRE
 PHASE 1**
 - Cushman & Wakefield
 - City of Pickering

L5

1:300

2019-06-21

A-019



1. Copyright of this drawing is reserved by the Architect. The drawing and all associated documents are an intellectual service by the Architect. The drawing and the information contained therein may not be reproduced in whole or in part without prior written permission of the Architect.
2. These Contract Documents are the property of the Architect. The Architect bears no responsibility for the interpretation of these documents by the Contractor. Upon written application, the Architect will provide written graphic clarification or supplementary information regarding the intent of the Contract Documents. The Architect will review Shop Drawings submitted by the Contractor for design confirmation only.
3. Drawings are not to be used for construction. The Contractor is to verify all existing conditions and dimensions required to perform the work and report any discrepancies with the Contract Documents to the Architect before commencing any work.
4. Portions of approved finished mechanical or electrical devices, fittings, and fixtures are indicated on architectural drawings. The locations shown on the architectural drawings govern over the Mechanical and Electrical drawings. These items not clearly located will be located as directed by the Architect.
5. These drawings are not to be used for construction unless noted below as "Issued for Construction".
6. All work is to be carried out in accordance with the Code and Bylaws of the authority having jurisdiction.
7. The Architect of these plans and specifications gives no warranty or representation to any party about the completeness of the background represented by them. All contractors or subcontractors must satisfy themselves when bidding and at all times ensure that they can properly construct the work represented by these plans.

© architectalliance, 2017

aA

205-317 Adelaide St. West
 Toronto, Ontario M5V 1P9
 1-416-599-0500
 F: 416-593-4911
 info: architectalliance.com



**PICKERING TOWN CENTRE
 PHASE 1**
 - Cushman & Wakefield
 - City of Pickering

ROOF PLAN

1:300

2019-06-21

A-020