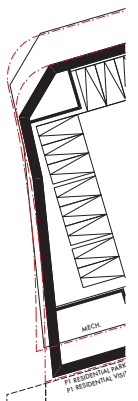


GCA: 10,254 m<sup>2</sup>  
 BLOCK 1 RESIDENTIAL PARKING: 229

1. Copyright of this drawing is reserved by the Architect. The drawing and all associated documents are an instrument of service by the Architect. The drawing and the information contained therein may not be reproduced in whole or in part without prior written permission of the Architect.
  2. These Contract Documents are the property of the Architect. The Architect bears no responsibility for the interpretation of these documents by the Contractor. Upon written application, the Architect will provide written graphic clarification or supplementary information regarding the intent of the Contract Documents. The Architect will review Shop Drawings submitted by the Contractor for design confirmation only.
  3. Drawings are not to be scaled for construction. The Contractor is to verify all existing conditions and dimensions required to perform the work and report any discrepancies with the Contract Documents to the Architect before commencing any work.
  4. Portions of approved finished mechanical or electrical devices, fittings, and fixtures are indicated on architectural drawings. The locations shown on the architectural drawings govern over the Mechanical and Electrical drawings. These items not clearly located will be located as directed by the Architect.
  5. These drawings are not to be used for construction unless noted below as "Intention For Construction".
  6. All work is to be carried out in conformance with the Code and Bylaws of the authority having jurisdiction.
  7. The Architect of these plans and specifications gives no warranty or representation to any party about the appropriateness of the building(s) represented by these. All contractors or subcontractors must satisfy themselves when bidding and at all times ensure that they can properly construct the work represented by these plans.
- © architect Alliance, 2017



aA

205-317 Adelaide St. West  
 Toronto, Ontario M5V 1P9  
 T 416 593 6500  
 F 416 593 4911  
 info: architectalliance.com



**PICKERING TOWN CENTRE  
 PHASE 1**  
 - Cushman & Wakefield  
 - City of Pickering

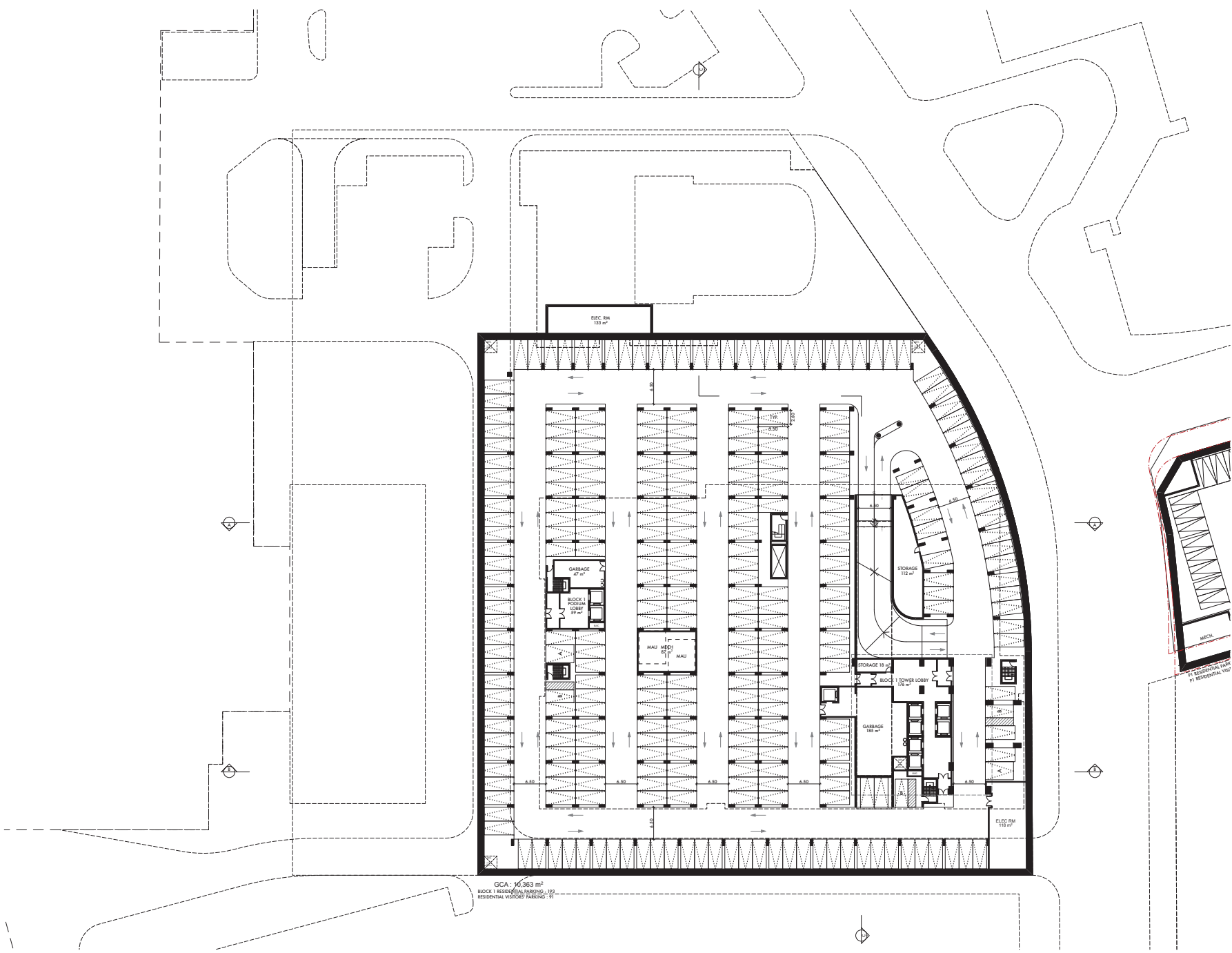
P3

1:300

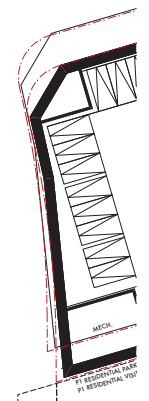
2019-06-21

**A-012**

1. Copyright of this drawing is reserved by the Architect. The drawing and all associated documents are an instrument of service by the Architect. The drawing and the information contained therein may not be reproduced in whole or in part without prior written permission of the Architect.
  2. These Contract Documents are the property of the Architect. The Architect bears no responsibility for the interpretation of these documents by the Contractor. Upon written application, the Architect will provide written graphic clarifications or supplementary information regarding the intent of the Contract Documents. The Architect will review Shop Drawings submitted by the Contractor for design conformance only.
  3. Drawings are not to be scaled for construction. The Contractor is to verify all existing conditions and dimensions required to perform the work and report any discrepancies with the Contract Documents to the Architect before commencing any work.
  4. Portions of approved finished mechanical or electrical devices, fittings, and fixtures are indicated on architectural drawings. The locations shown on the architectural drawings govern over the Mechanical and Electrical drawings. These items not clearly located will be located as directed by the Architect.
  5. These drawings are not to be used for construction unless noted below as "Issuance For Construction".
  6. All work is to be carried out in conformance with the Code and Bylaws of the authority having jurisdiction.
  7. The Architect of these plans and specifications gives no warranty or representation to any party about the appropriateness of the building(s) represented by these. All contractors or subcontractors must satisfy themselves when bidding and at all times ensure that they can properly construct the work represented by these plans.
- © architect Alliance, 2017



GCA: 10,363 m<sup>2</sup>  
 BLOCK 1 RESIDENTIAL PARKING - 199  
 RESIDENTIAL VEHICLE PARKING - 19



aA

205-317 Adelaide St. West  
 Toronto, Ontario M5V 1P9  
 T 416 593 6500  
 F 416 593 4911  
 info: architectalliance.com



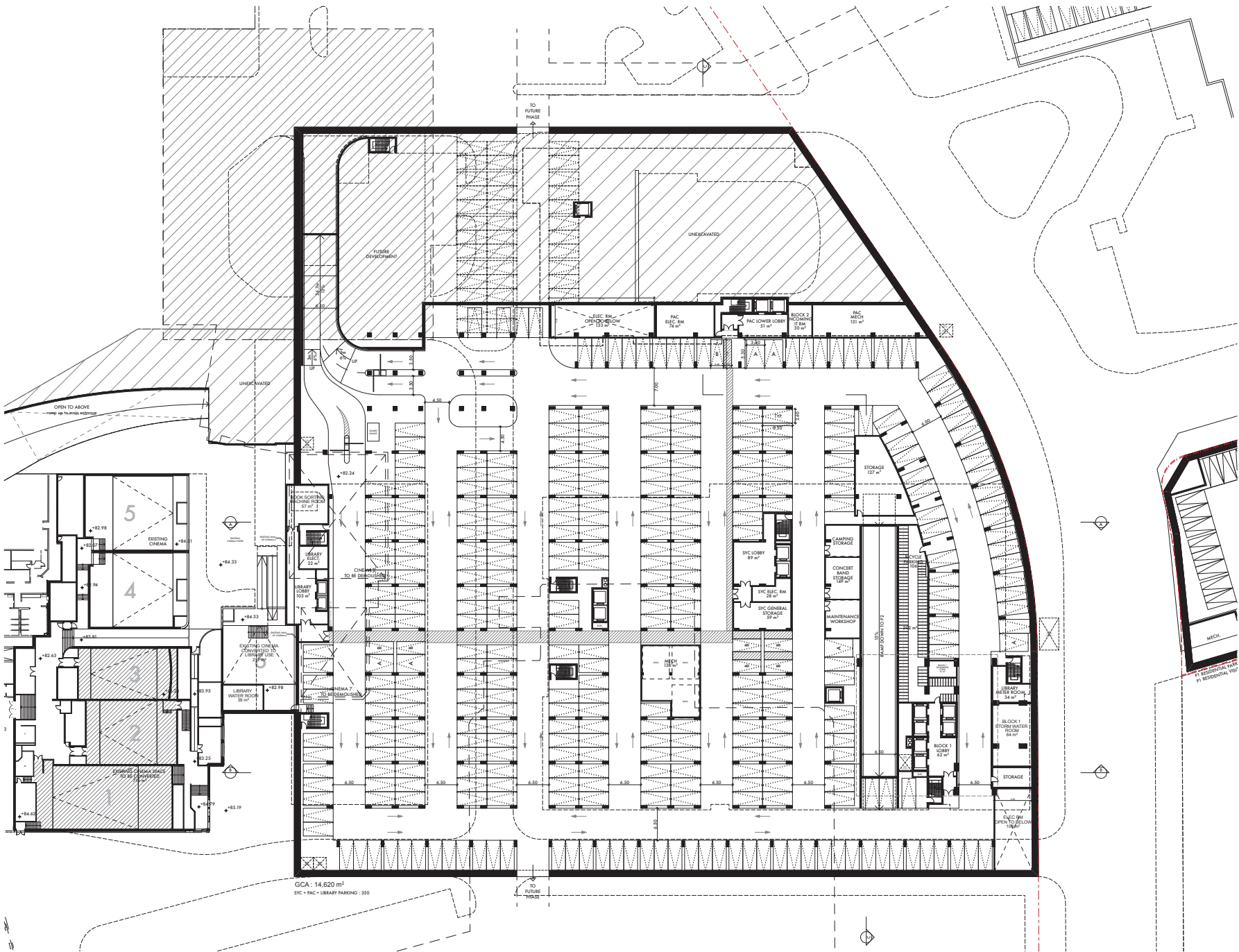
**PICKERING TOWN CENTRE  
 PHASE 1**  
 - Cushman & Wakefield  
 - City of Pickering

P2

1:300

2019-06-21

**A-013**



GCA: 14,620 m<sup>2</sup>  
 SVC = PAC + LIBRARY PARKING: 350

1. Copyright of this drawing is reserved by the Architect. The drawing and all associated documents are an intellectual service by the Architect. The drawing and the information contained therein may not be reproduced in whole or in part without prior written permission of the Architect.
2. These Contract Documents are the property of the Architect. The Architect bears no responsibility for the interpretation of these documents by the Contractor. Upon written application, the Architect will provide written graphic clarification or supplementary information regarding the intent of the Contract Documents. The Architect will review Shop Drawings submitted by the Contractor for design conference only.
3. Drawings are not to be used for construction. The Contractor is to verify all existing conditions and dimensions required to perform the work and report any discrepancies with the Contract Documents to the Architect before commencing any work.
4. Portions of approved finished mechanical or electrical devices, fittings, and fixtures are indicated on architectural drawings. The locations shown on the architectural drawings govern over the Mechanical and Electrical drawings. Those items not clearly located will be located as directed by the Architect.
5. These drawings are not to be used for construction unless noted below as "Issuance for Construction".
6. All work to be carried out in conformance with the Code and Bylaws of the authority having jurisdiction.
7. The Architect of these plans and specifications gives no warranty or representation to any party about the appropriateness of the building(s) represented by these. All contractors or subcontractors must satisfy themselves when bidding and at all times ensure that they can properly construct the work represented by these plans.

© architect Alliance, 2017

aA

205-317 Adelaide St. West  
 Toronto, Ontario M5V 1P9  
 T 416 593 6500  
 F 416 593 4911  
 info: architectalliance.com



**PICKERING TOWN CENTRE  
 PHASE 1**  
 - Cushman & Wakefield  
 - City of Pickering

P1

1:300

2019-06-21

**A-014**