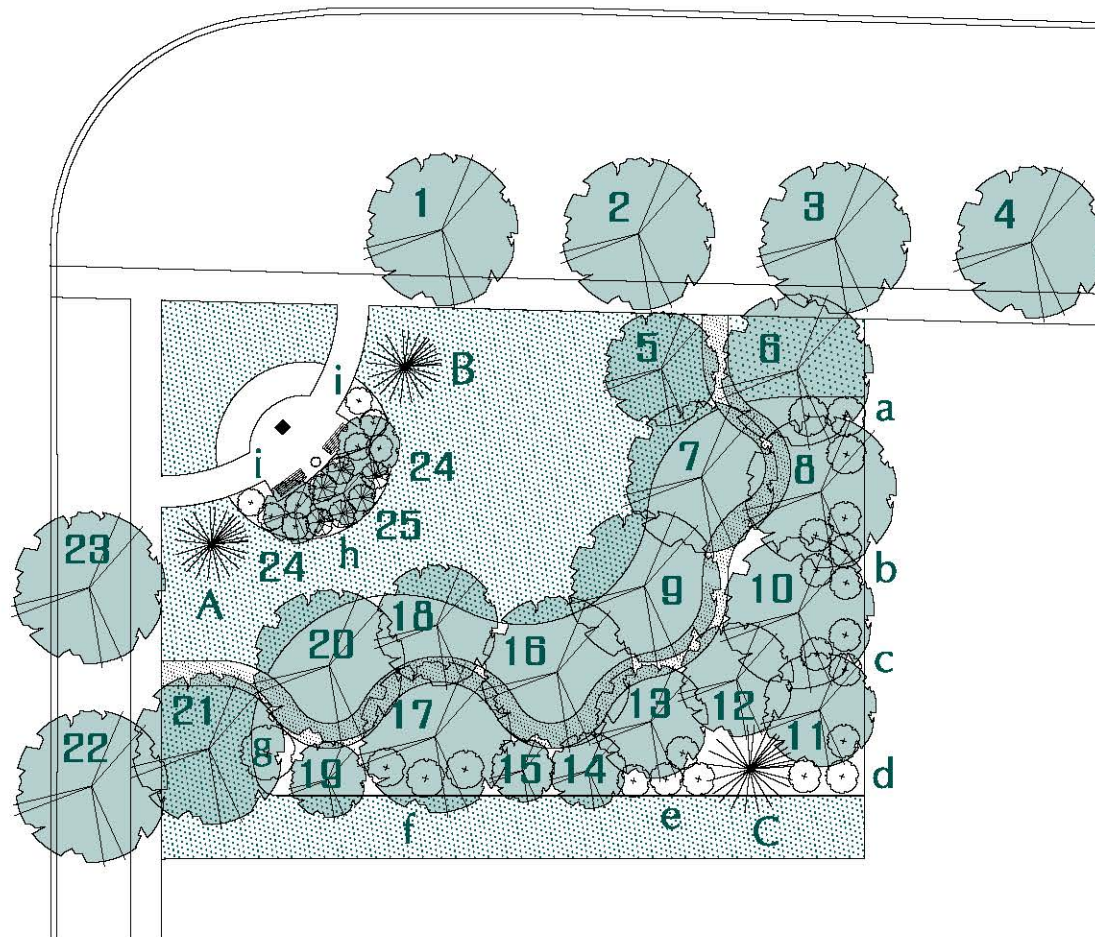


# Bicentennial Arboretum

The Bicentennial Arboretum was constructed in 2011 as a celebration of the City of Pickering's 200th Anniversary and with the generous financial support of Tree Canada and TD Friends of the Environment through their TD Green Streets program. The planting was done with some assistance of the school children of the City of Pickering, each school becoming the steward of one tree, to remain for future generations to learn from and enjoy. All the trees and shrubs featured in this arboretum are native to the Province of Ontario.

## FINCH AVENUE

## ROSEBANK ROAD



## Deciduous Trees

1. Hackberry (*Celtis occidentalis*)
2. Red Maple (*Acer rubrum*)
3. Silver Maple (*Acer saccharinum*)
4. Sugar Maple (*Acer saccharum*)
5. Blue Beech (*Carpinus caroliniana*)
6. Bitternut Hickory (*Carya cordiformis*)
7. Black Gum (*Nyssa sylvatica*)
8. Basswood (*Tilia americana*)
9. Butternut (*Juglans cinerea*)
10. Bur Oak (*Quercus macrocarpa*)
11. Trembling Aspen (*Populus tremuloides*)
12. White Birch (*Betula papyrifera*)
13. Ironwood (*Ostrya virginiana*)
14. Pagoda dogwood (*Cornus alternifolia*)
15. Nannyberry (*Viburnum lentago*)
16. Black Walnut (*Juglans nigra*)
17. Black Cherry (*Prunus serotina*)
18. Tulip Tree (*Liriodendron tulipifera*)
19. Downy Hawthorn (*Crataegus mollis*)
20. American Beech (*Fagus grandifolia*)
21. White Oak (*Quercus alba*)
22. Red Oak (*Quercus rubra*)
23. Kentucky Coffee Tree (*Gymnocladus dioica*)
24. Shadblow Serviceberry (*Amelanchier canadensis*)
25. Downy Serviceberry (*Amelanchier arborea*)

## Coniferous Trees

- A. Jack Pine (*Pinus banksiana*)
- B. White Spruce (*Picea glauca*)
- C. Tamarack (*Larix laricina*)

## Shrubs

- a. Bush Honeysuckle (*Diervilla lonicera*)
- b. Common Elderberry (*Sambucus canadensis*)
- c. Flowering Raspberry (*Rubus odoratus*)
- d. Grey Dogwood (*Cornus racemosa*)
- e. Red Osier Dogwood (*Cornus stolonifera*)
- f. Highbush Cranberry (*Viburnum trilobum*)
- g. Arrowwood (*Viburnum dentatum*)
- h. Winterberry (*Ilex verticillata*)
- i. Snowberry (*Symphoricarpos albus*)