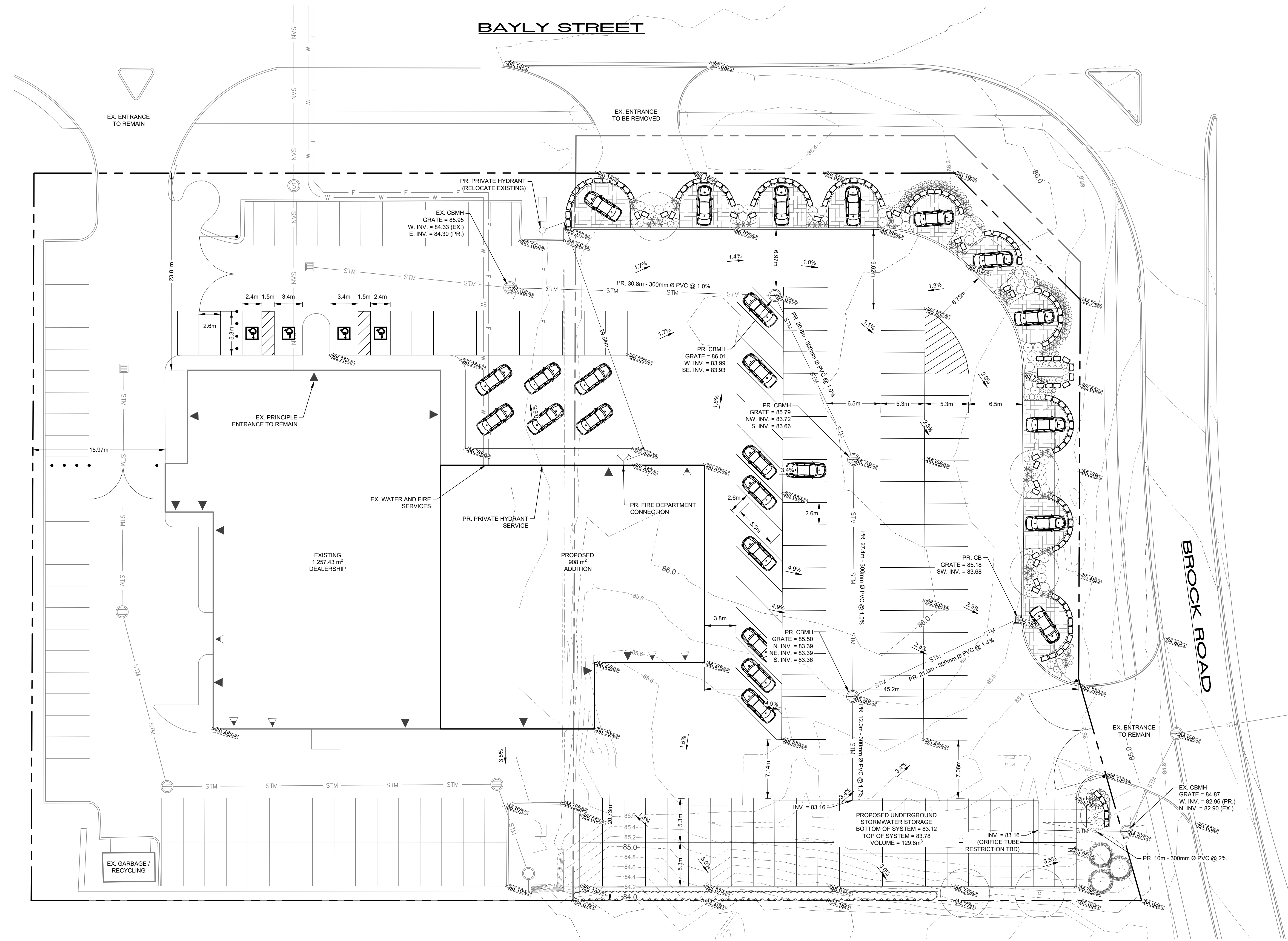
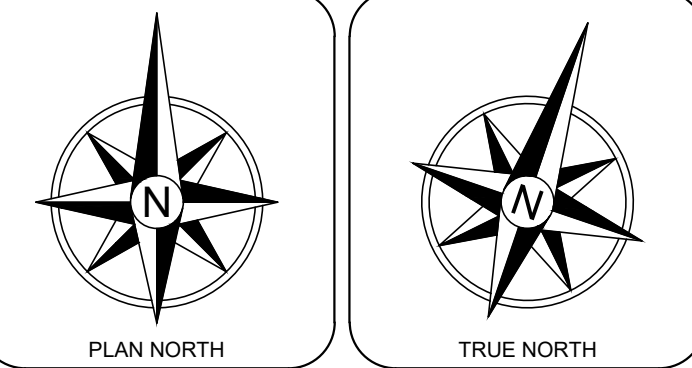
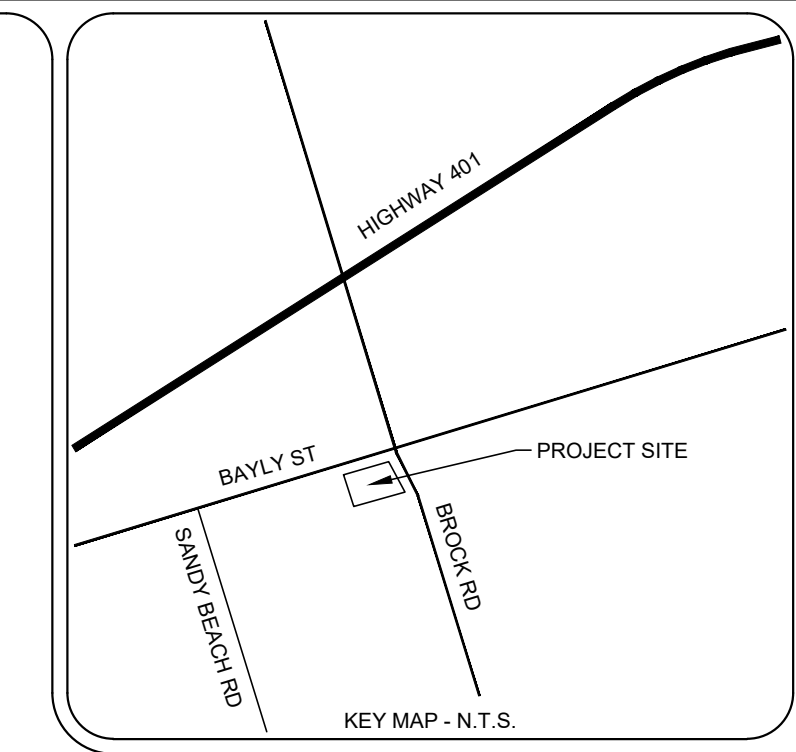


METRIC
ALL UNITS ARE METRIC UNLESS NOTED OTHERWISE

- NOTES:**
1. TOPOGRAPHIC SURVEY PROVIDED BY J.D. BARNES LTD. (OCT 28, 2020). ELEVATIONS ARE GEODETIC AND REFERRED TO CITY OF PICKERING BENCHMARK No. R-042 HAVING A PUBLISHED ELEVATION OF 84.884m (CGVD-1928:1978).
 2. THE LOCATIONS OF ALL UTILITIES ARE ILLUSTRATIVE ONLY. THE ACCURACY OF LOCATION, DEPTH OR ORIENTATION IS NOT IMPLIED. ALL SUB-CONTRACTORS ARE TO CONFIRM INDEPENDENTLY THE EXACT LOCATIONS OF ALL UTILITIES AND SHALL ASSUME LIABILITY FOR ANY AND ALL DAMAGES INCURRED BY THEM.
 3. CONSTRUCTION DETAILS NOT SHOWN ON PLANS ARE TO BE REFERENCED TO ONTARIO PROVINCIAL STANDARD DRAWINGS AND MUNICIPAL SPECIFICATIONS & STANDARDS, AS APPLICABLE.



REV	DATE ISSUED	REVISION DESCRIPTION
2	01-04-26	REISSUED FOR REZONING
1	23-12-25	FOR REZONING

PROJECT NAME
**BESSADA KIA
PROPOSED ADDITION**
1675 BAYLY STREET
PICKERING, ON

PROJECT No.
23-1368



SCALE	DRAWN	CHECKED	APPROVED
1:250	DL	DT	DL

DRAWING TITLE: **GRADING PLAN**

DRAWING No.: **C2**