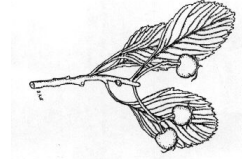


Arborist Report For

1942 Woodview Avenue

Pickering, ON (September 21, 2022)



DAWhiteTreeCare.com Tel: 416 431 2453, e-mail: DAWhiteTreeCare@gmail.com

D. Andrew White M. Sc. ISA Certified Arborist ON-0734. 78 Marcella St. Toronto, ON, M1G 1L2.

1. Introduction

The following is an arborist report for the property at 1942 Woodview Avenue, in Pickering Ontario. The purpose of this report was to inventory the trees on the site and ascertain the potential impacts of the proposed development on the trees on, and near, the subject site.

This report was prepared for:

AMER NISAR
(BSc. Civil Engineer)
Sales Representative
Metro King Realty
Cell: 416-890-9811
Off : 416-249-8282
Fax : 1-888-332-2891
www.amernisar.com

2. Methods

An on-site inspection was made on August 5, 2021. The sizes of individual trees were measured as diameter at breast height (DBH), breast height being 140 cm from ground level. From the data collected plant Condition Rating (CR), Location Rating (LR), Species Rating (SR), and minimum Tree Protection Zones (TPZ), were estimated.^{1,2}

3. Discussion

There are plans to build three residential buildings at 1942 Woodview Avenue, in Pickering Ontario. Almost eighty (78) non-exempt trees would be removed to allow for the proposed residential development (Table 1, Fig. 1).

Roadside:

Up to eight (8) trees in the right-of-way zone would be removed. The trees are not compatible the current Site Plan Proposal (Fig. 1, Photos 1-3 & 5).

Laneway & Cul de Sac:

There are ten (10) trees that would be very close to the proposed laneway and cul de sac. One (1) of the trees (#75) could be retained with risk of injury (Fig. 1, Photo 5).

Worksite & Building Envelope:

At least twenty eight (28) trees over 15 cm DBH would be either inside the proposed building envelopes, or too close to the landscaping work (Fig. 1, Photos 3, 4 & 6).

Wetland Setback:

A Wetland Setback of 30 metres bisects the south and southwest portion of the site. Thirty four (34) trees over 15 cm DBH in this setback that are in the worksite area. Of these trees, twelve (12) trees are inside of the 10 metre Woodland Drip-Line Buffer. About twenty (c20) of the trees are less than 15 cm DBH. These Wetland buffer zone trees in the buffer zone could be retained (Fig. 1, Photos 7-9).

Line of Trees:

On the west side of the site there is an overlapping wooded area, i.e. the “Line of Trees”. This forested area is to be retained. There are twenty three (23) trees over 15 cm DBH on this portion of the development site (Fig. 1, Photos 8-10).

The trees would be protected by 1.2 m (4 ft) plywood and/or sediment fence (silt-fence) **tree protection barriers**. The barriers would extend along the margin of the wooded area that is to be retained (6.1-3 Appendix, Fig. 1).

Neighbouring Trees:

About ten (10) trees over 15 cm DBH on neighbouring sites are less than their TPZ radii from the worksite (Fig. 1, Photos 8 & 10).

Off-site trees would be protected by 1.2 m (4 ft) plywood **tree protection barriers** or 2.4 m (8 ft) wire-mesh construction fences. The barriers would be placed near the setback. The exception would be where the wooded areas to be retained extend into the subject site. These area would be protected by sediment control barriers (6.1-3 Appendix, Fig. 1).

3.2 Replacement Trees:

A landscape plan is to be developed for the 1942 Woodview Avenue property. Up to eighty (80) or more new trees may need to be accounted for, as replacements for the trees that would be removed. The final number of replacement trees to be planted on the site is to be determined by the City of Pickering (Fig. 1).

The new trees would be of large calliper nursery grown stock. The trees would be transplanted as according to municipal codes and bylaws.^{4,5}

- (1) Minimum 60 mm calliper (2-inch wide stem) for deciduous trees
- (2) Minimum 1.8 m height for coniferous trees

Trees would best be transplanted during the spring or autumn. Mid-summer transplanting should be avoided. These trees are to be maintained in good condition. Supplemental watering may be required during the drier periods of the year, especially during the first two or three years after their transplantation.^{4,5}

4. Conclusions

There are plans to build residential building at 1942 Woodview Avenue, in Pickering Ontario. At least ninety (90) non-exempt trees would be injured or removed to allow for the proposed residential development (Table 1, Fig. 1).

Tree Impacts:

Up to eight (8) trees in the right-of-way zone would be removed. The trees are not compatible the current Site Plan Proposal (Fig. 1, Photos 1-3 & 5).

- 8 trees in right-of-way to be removed

There are ten (10) trees that would be very close to the proposed laneway and cul de sac. One (1) of the trees (#75) could be retained with risk of injury (Fig. 1, Photo 5).

- 10 trees in proposed driveway & cul de sac

At least twenty eight (28) trees over 15 cm DBH would be either inside the proposed building envelopes, or too close to the back yard of the site (Fig. 1, Photos 3, 4 & 6).

- 28 trees in building envelopes or too to excavation

A Wetland setback of 30 metres bisects the southern portion of the site. Thirty four (34) trees over 15 cm DBH are inside of the 30 m Wetland Buffer zone. in this setback that are in the worksite area. Of these trees, twelve (12) are inside of the 10 metre Woodland Drip-Line Buffer. These Wetland buffer trees could be retained (Fig. 1, Photos 1-3 & 5).

- 34 trees over 15 cm DBH in 30 m Wetland Setback (buffer), to be removed
- 12 trees over 15 cm DBH in 10 m Wetland Buffer, could be retained

Ten (10) trees over 15 cm DBH on neighbouring sites are less than their TPZ radii from the worksite (Fig. 1, Photos 8 & 10).

- 10 neighbouring trees over 15 cm DBH at some injury risk

On the west side of the site there is an overlapping wooded area, i.e. the “Line of Trees”. This forested area is to be retained. There are twenty three (23) trees over 15 cm DBH on this portion of the development site (Fig. 1, Photos 8-10).

- 23 trees over 15 cm in W wooded area to be protected

Tree Protection:

The trees would be protected by 1.2 m (4 ft) plywood and/or sediment fence (silt-fence) **tree protection barriers**. The barriers would extend along the margin of the wooded area that is to be retained (6.1-3 Appendix, Fig. 1).

Off-site trees would be protected by 1.2 m (4 ft) plywood **tree protection barriers** or 2.4 m (8 ft) wire-mesh construction fences. The barriers would be placed near the setback. The exception would be where the wooded areas to be retained extend into the subject site. These margins of the site would be protected by sediment control barriers (6.1-3 Appendix, Fig. 1).

- Plywood tree protection barrier near N setback
- Sediment control barriers (silt-fence) near W woodland & S wetland margins

D. Andrew White M. Sc.



September 21, 2022

5. Tree Data:

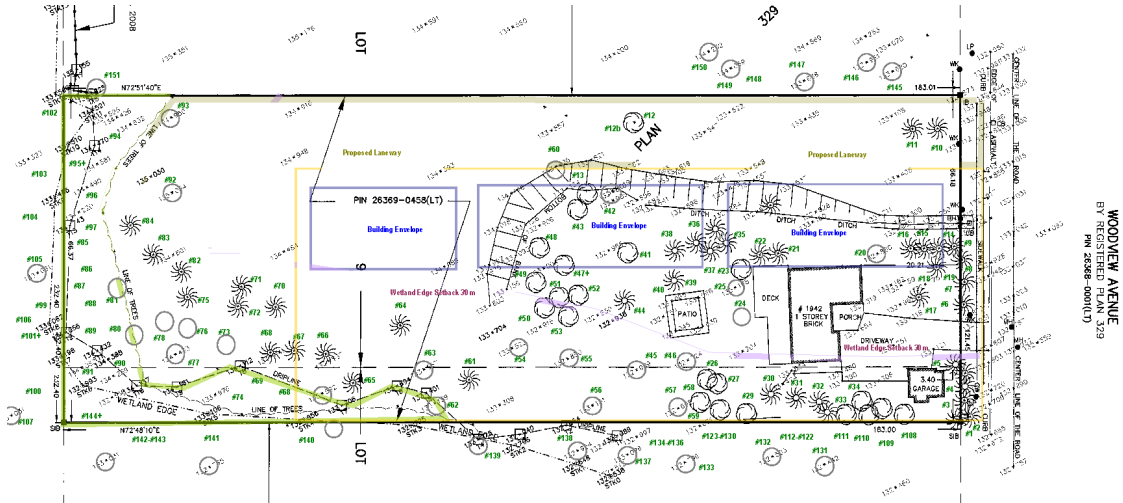


Figure #1a: Tree locations on the 1942 Woodview Avenue development site, with trees numbered (green) and 30 m Wetland Setback (purple) indicated. .

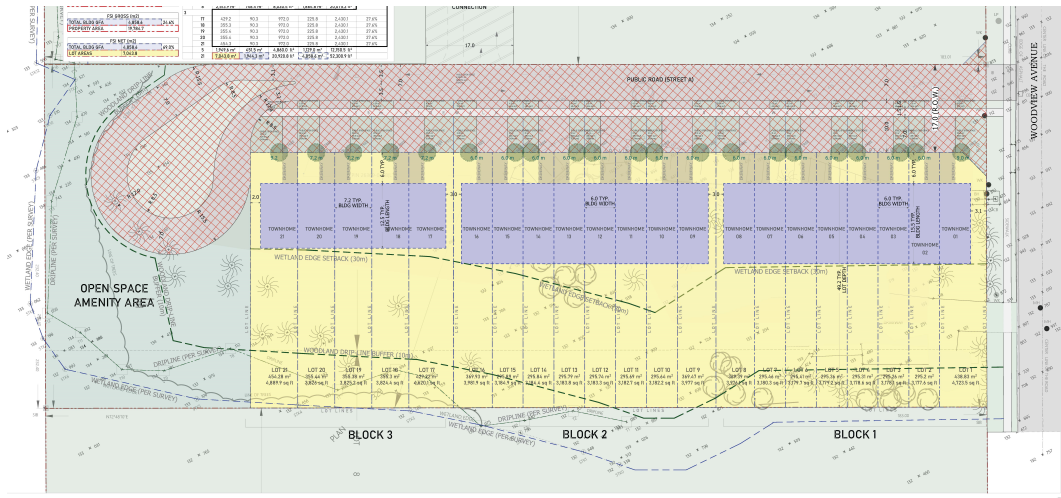


Figure #1b: General layout of the 1942 Woodview Avenue development trees are numbered (green) and tree protection barriers (red) are indicated. See Figure T#1: full-scale Tree Protection Plan (TPP) and Site Plan Proposal (Planning Version Ei: 2022-07-20) for more details.



Photograph #1: Trees #1 to 6 on the roadside of the 1942 Woodview Avenue property.



Photograph #2: Trees #6 to #9 on the roadside of the 1942 Woodview Avenue property.



Photograph #3: Trees #6 to #11 near the roadside of the 1942 Woodview Avenue property.



Photograph #4: Trees #21 to #38 on the 1942 Woodview Avenue property.



Photograph #5: Trees #10, #11, and #12 on the north side of the 1942 Woodview Avenue property.



Photograph #6: Trees #26 to #29 on the backyard of the 1942 Woodview Avenue property.



Photograph #7: Trees #40 to #55 on the backyard of the 1942 Woodview Avenue property.



Photograph #8: Trees #62 to #73 in the southeast backyard of the 1942 Woodview Avenue property.



Photograph #9: Trees #84 to #104 near the backyard of the 1942 Woodview Avenue property.



Photograph #10: Trees #32 to #34+, and trees #113 to #121, on and near the side-yard of the 1942 Woodview Avenue property.

Table 1: Tree number (No); tree species; diameter at breast height (DBH); Tree Protection Zones (TPZ) comments; municipal Tree Category (TC); and recommended action.

No.	Species	DBH (cm)	TPZ (m)	Comments	TC	Action
#1	White Pine	32	2.4	Crown base at 4 m tag #201	Town	Retain
#2	Norway Spruce	40	2.4	Tree in low-fair condition tag #202	Town	Remove 10 m WDB Roadside
#3	Norway Spruce	41	3.0	Tree in fair condition tag #203	Town	Remove 10 m WDB Roadside
#4	Norway Spruce			Tree in low-fair condition tag #204	Town	Remove Roadside
#5	Norway Spruce	48	3.0	Tree in fair condition tag #205	Town	Remove Roadside
#6	White Spruce	36	2.4	Tree in fair condition tag #206	Town	Remove Roadside
#7	Norway Spruce	45	3.0	Tree in fair condition tag #207	Town	Remove Roadside
#8	Norway Spruce	31	2.4	Tree in fair condition tag #207	Town	Remove Roadside
#9	White Spruce	62	4.2	Tree in low-fair condition tag #209	Town	Remove Roadside
#10	White Spruce	54	3.6	Tree in good condition, low crown base tag #210	Private	Remove Laneway
#11	Blue Spruce	32	2.4	Tree in high-fair condition, low crown base tag #211	Private	Remove Laneway

No.	Species	DBH (cm)	TPZ (m)	Comments	TC	Action
#12	Silver Maple	14-19	1.8	Multi-stem tree or coppice near elm #12b tag #212	Private	Remove Laneway
#12b	White Elm	15-24	1.8	Multi-stem tree near maple #12	Private	Remove Laneway
#13	White Spruce	38	2.4	Tree with high crown base, low-fair condition tag #213	Private	Remove Worksite
#14	White Spruce	47	2.4	Tree with high crown base, low-fair condition	Private	Remove Worksite
#15	White Spruce	33	2.4	Tree with high crown base, low-fair condition	Private	Remove Worksite
#16	White Spruce	53	3.6	Tree with high crown base, low-fair condition	Private	Remove Worksite
#17	Norway Maple	31	2.4	Tree with high crown base, fair condition	Private	Remove Worksite
#18	White Spruce	44	3.0	Tree with high crown base, in poor condition	Private	Remove Worksite
#19	White Spruce	33	2.4	Tree with high crown base, fair condition	Private	Remove Worksite

No.	Species	DBH (cm)	TPZ (m)	Comments	TC	Action
#20	Blue Spruce	18	1.8	Tree with high crown base, in poor condition	Private	Remove Worksite
#21	White Spruce	56	3.6	Tree with high crown base, in low-fair condition	Private	Remove Worksite
#22	White Spruce	44	3.0	Tree with high crown base, in low-fair condition	Private	Remove Worksite
#23	Blue Spruce	36	55	Tree with high crown base, in low-fair condition	Private	Remove Worksite
#24	Norway Maple	36	55	Tree with trunk bifurcate at 1.8 m	Private	Remove Worksite
#25	Weeping Cypress	15	1.8	Tree in fair condition	Private	Remove Worksite
#26	Norway Maple	21	1.8	Tree with red leaf, in fair condition	Private	Remove Wetland Setback 30 m
#27	White Spruce	47	3.0	Tree with high crown base, in fair condition	Private	Remove Wetland
#28	White Spruce	43	3.0	Tree with high crown base at 3 m	Private	10 m WDB Wetland
#29	Blue Spruce	34	2.4	Tree with high crown base, in fair condition	Private	Remove near Wetland
#30	Blue Spruce	42	3.0	Tree with high crown base at 3 m	Private	10 m WDB Wetland

No.	Species	DBH (cm)	TPZ (m)	Comments	TC	Action
#31	Blue Spruce	36	2.4	Tree with high crown base at 3 m	Private	10 m WDB Wetland
#32	Juniper	26	1.8	Tree in low-fair condition	Private	10 m WDB Wetland
#33	Scots Pine	46	3.0	Tree with crown base at 4 m, in low-fair condition	Private	10 m WDB Wetland
#34+	Emerald Cedars, 8	10-12	1.8	Hedge trees in fair to good condition	Private	Exempt Wetland
#35	White Spruce	43	3.0	Tree with high crown base at 4 m	Private	Remove Worksite
#36	White Spruce	41	3.0	Tree with high crown base, in fair condition	Private	Remove Worksite
#37	White Spruce	41	3.0	Tree with crown base at 2 m, in fair condition	Private	Remove Worksite
#38	White Spruce	40	2.4	Tree with high crown base, in fair condition	Private	Remove Worksite
#39	Blue Spruce	20	1.8	Tree in poor condition	Private	Remove Worksite
#40	Blue Spruce	33	2.4	Tree with high crown base, in fair condition	Private	Remove Worksite
#41	Blue Spruce	36	2.4	Tree with high crown base, in fair condition	Private	Remove Worksite

No.	Species	DBH (cm)	TPZ (m)	Comments	TC	Action
#42	White Spruce	44	3.0	Tree with high crown base, in fair condition	Private	Remove Worksite
#43	White Spruce	30	NA	Dead tree	Private	Remove Worksite
#44	Blue Spruce	32	2.4	Tree in very poor condition	Private	Remove Worksite
#45	Blue Spruce	20	1.8	Tree in very poor condition	Private	Remove Worksite
#46	White Spruce	22	1.8	Tree with high crown base, in fair condition	Private	Remove Worksite
#47+	Green Ash	8-14	1.8	Coppice from stump	Private	Exempt Worksite
#48	White Spruce	33	2.4	Tree in poor condition, near ash coppice	Private	Remove Worksite
#49	White Spruce	46	3.0	Tree with high crown base, in fair condition	Private	Remove Worksite
#50	Norway Maple	26	1.8	Tree in fair condition	Private	Remove Wetland Setback
#51	Blue Spruce	15	1.8	Tree with high crown base, in fair condition	Private	Remove Worksite
#52	Green Ash	5-8	1.2	Coppice from ash stump	Private	Exempt Worksite
#53	Norway Maple	16	1.8	Small tree in fair condition	Private	Remove Wetland Setback

No.	Species	DBH (cm)	TPZ (m)	Comments	TC	Action
#54	White Spruce	52	3.6	Tree with high crown base, in fair condition	Private	Remove Wetland Setback
#55	White Spruce	28	1.8	Tree with high crown base, in fair condition	Private	Remove Wetland Setback
#56	Norway Maple	16	1.8	Tree in fair condition	Border	10 m WDB Wetland Setback
#57	White Spruce	24	1.8	Tree in fair condition	Private	10 m WDB Wetland Setback
#58	White Spruce	14	1.8	Tree in poor condition	Private	10 m WDB Wetland Setback
#59	White Spruce	14	1.8	Tree in good condition	Private	10 m WDB Wetland Setback
#60	Juniper	18	1.8	Tree in low-fair condition with thin foliage	Private	Remove Laneway
#61	Norway Maple	42	3.0	Tree with high crown base in fair condition	Private	Remove Wetland Setback
#62	White Spruce	36	2.4	Tree with high crown base in fair condition	Private	10 m WDB Line of Trees
#63	White Pine	16	1.8	Tree in poor condition	Private	Remove Wetland Setback
#64	White Spruce	27	1.8	Tree in poor condition	Private	10 m WDB Wetland Setback
#65	Norway Maple	29	1.8	Tree with crown base at 2 m	Private	10 m WDB Wetland Setback

No.	Species	DBH (cm)	TPZ (m)	Comments	TC	Action
#66	Norway Maple	26	1.8	Tree with high crown base in fair condition	Private	Remove Wetland Setback 30 m
#67	White Spruce	22	1.8	Tree with high crown base in fair condition	Private	Remove Wetland Setback W
#68	Norway Maple	24	1.8	Tree with high crown base in fair condition	Private	Remove Near line of Trees
#69	White Spruce	35	2.4	Tree in fair condition	Private	Remove Line of Trees
#70	White Spruce	31	2.4	Tree in fair condition	Private	Remove Wetland Setback 30 m
#71	White Spruce	32	2.4	Tree in fair condition	Private	Injury risk Wetland
#72	White Spruce	31	2.4	Tree in fair condition	Private	Injury risk Wetland
#73	White Spruce	32	2.4	Tree in fair condition	Private	W Remove Wetland
#74	White Spruce	33	2.4	Tree in fair condition	Private	Remove Wetland
#75	Blue Spruce	28	1.8	Tree in fair condition	Private	Injury risk Wetland
#76	Blue Spruce	27	1.8	Tree in fair condition	Private	Wetland
#77	White Spruce	38	2.4	Tree in fair condition	Private	Wetland

No.	Species	DBH (cm)	TPZ (m)	Comments	TC	Action
#78	Norway Maple	39	2.4	Tree in fair condition	Private	Wetland (30 m)
#79	White Spruce	40	2.4	Tree in fair condition	Private	Wetland
#80	Blue Spruce	42	3.0	Tree in fair condition	Private	Remove Wetland
#81	Blue Spruce	28	1.8	Tree in fair condition	Private	Remove Wetland
#81	Blue Spruce	36	2.4	Tree in fair condition	Private	Remove Wetland
#82	Blue Spruce	19	1.8	Tree in fair condition	Private	Remove Wetland
#83	Blue Spruce	19	1.8	Tree in good condition	Border Woods	Remove Near line of Trees W
#84	Black Locust	15	1.8	Tree near woodland, good condition	Border Woods	Remove Line of Trees W
#85	White Spruce	35	2.4	Tree in good condition	Border Woods	Line of Trees
#86	Cottonwood	53	3.6	Tree near woodland, crown base at 4 m	Border Woods	Line of Trees
#87	Black Locust	52	3.6	Tree near woodland, crown base at 2 m	Border Woods	Line of Trees
#88	White Spruce	36	2.4	Tree near woodland in fair condition	Border Woods	Line of Trees
#89	White Spruce	38	2.4	Tree in fair condition	Border Woods	Line of Trees
#90	White Spruce	31	2.4	Tree in fair condition	Border Woods	Line of Trees
#91	White Spruce	36	2.4	Tree in fair condition	Border Woods	Line of Trees

No.	Species	DBH (cm)	TPZ (m)	Comments	TC	Action
#92	Blue Spruce	18	1.8	Small tree, in good condition	Border Woods	Remove Laneway & Wetland Setback
#93	White Pine	28	1.8	Tree near property line, in low-fair condition	Border Woods	Remove Laneway & Wetland Setback
#94	Cottonwood	51	3.6	Large tree near woodland, in low-fair condition	Border Woods	Line of Trees
#95+	Black Locusts	10-14	1.8	Small seedlings near woodland margin	Border Woods	Line of Trees
#96	Red Elm	14	1.8	Small tree near woodland, good condition	Border Woods	Line of Trees
#97	Black Locust	15	1.8	Small tree near woodland, good condition	Woods	Line of Trees
#98	Cottonwood	53	3.6	Woodland tree in low-fair condition	Woods	Line of Trees W
#99	Black Locust	52	3.6	Tree in fair condition	Woods	Line of Trees W
#100	White Willow	92	6.0	Large tree with poor crown form	Woods	Line of Trees W
#101+	Silver Maples	10-15	1.2-1.8	Small trees in good condition	Woods	Line of Trees W
#102	Cottonwood	20-26	1.8	Tree with poor crown form	Woods	Line of Trees W


No.	Species	DBH (cm)	TPZ (m)	Comments	TC	Action
#103	Silver Maple	15	1.8	Tree in fair condition	Woods	Line of Trees W
#104	Manitoba Maple	26	1.8	Tree in good condition	Woods	Line of Trees W
#105	Black locust	28	1.8	Tree in good condition	Woods	Line of Trees W
#106	Cottonwood	54	3.6	Tree with poor crown form	Woods	10 m WDB Line of Trees W
#107	Black locust	61	4.2	Tree with 3 leaders at 3 m	Woods	Line of Trees W
#108- #113	Green Ash, 8	8-12	1.2-1.8	Seedlings in fair to good condition	Neigh.	10 m WDB S wood
#114+	Green Ash, 8	2-5	1.2	Seedlings in fair to good condition	Neigh.	Protect 10 m WDB
#115	Green Ash	19	1.8	Tree with EAB, poor condition	Neigh.	Protect
#116	Silver Maple	78	4.8	Large tree with 2 leaders at 5 m	Neigh.	Protect Injury risk
#117	silver Maple	15-21	1.8	Small tree in good condition	Neigh.	Protect
#118	Scots Pine	46	3.0	Tree in low-fair condition	Neigh.	Protect Injury Risk
#119	Green Ash	14-16	1.8	Tree with EAB damage, 2 stems at 0 m	Neigh.	Protect
#120	White Spruce	12	1.8	Tree near property line, good condition	Neigh. Border	Protect

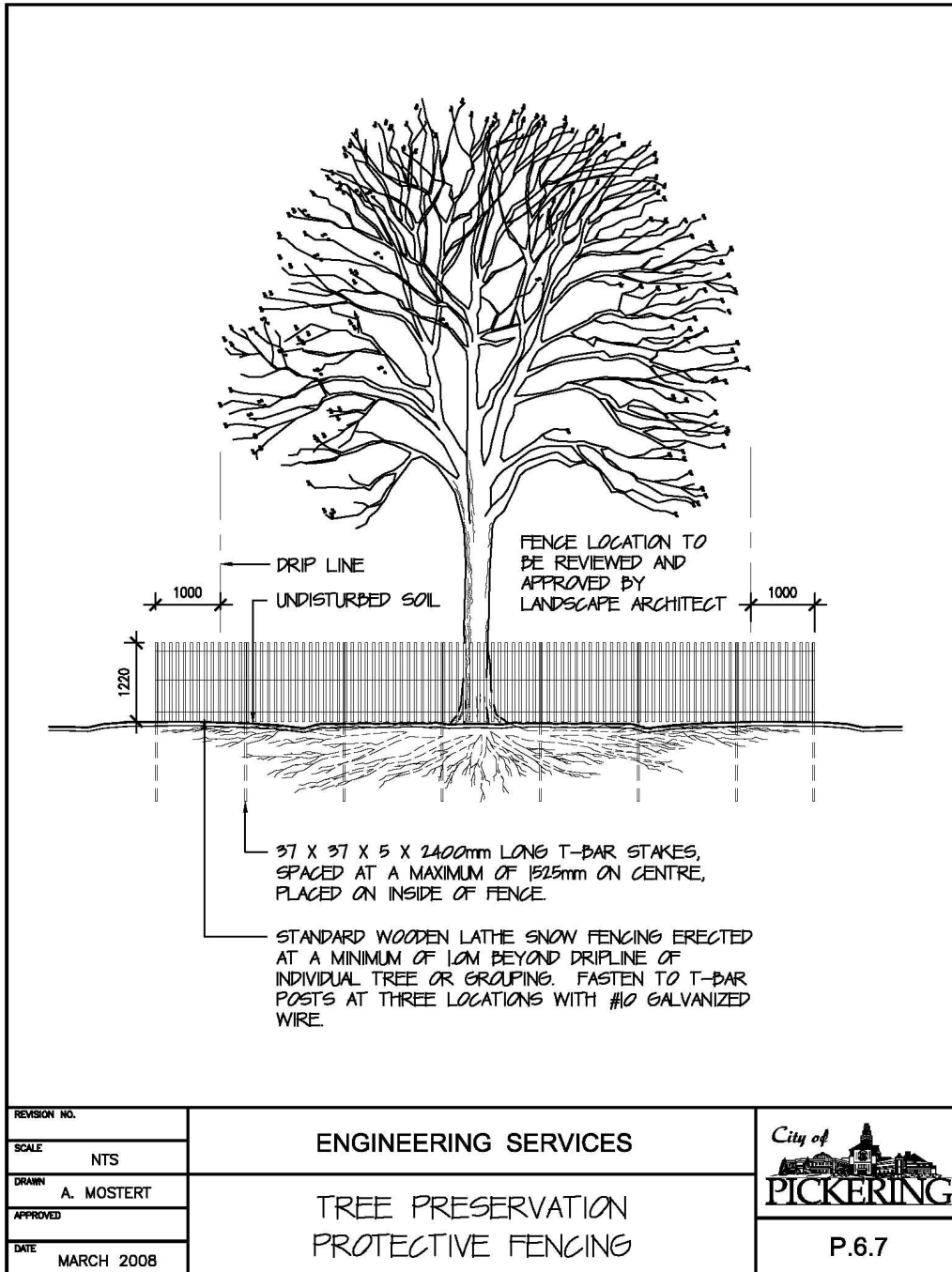
No.	Species	DBH (cm)	TPZ (m)	Comments	TC	Action
#121	Silver Maple	27	1.8	Tree in fair condition	Neigh.	Protect Injury Risk
#122	Fir	21	1.8	Tree in low-fair condition	Neigh.	Protect
#123- #124+	Green Ash	3-10	1.2	Seedlings in poor to good condition, some EAB	Neigh.	Protect
#125	White Spruce	12	1.8	Tree in good condition	Neigh.	Protect
#126	Silver Maple	14	1.8	Tree in fair condition	Neigh.	Protect
#127	White Spruce	14	1.8	Tree in good condition	Neigh.	Protect
#128+	Manitoba Maples	10-19	1.2-1.8	Small trees in fair to good condition	Neigh.	Protect
#129	Red Elm	62	4.2	Large tree in fair condition	Neigh.	Protect Injury Risk
#130	Manitoba Maple	10-27	1.8	Tree in fair condition	Neigh.	Protect Injury Risk
#131	White Willow	16-24	1.8	Tree in fair condition	Neigh.	Protect Injury Risk
#132	Cottonwood	52	3.6	Large tree in low-fair condition	Neigh.	Protect Injury Risk
#133- #136	Trembling Aspens	8-14	1.2-1.8	Small trees in fair to good condition	Neigh.	Protect
#137	Silver Maple	42	3.0	Large tree, crown base at 5 m	Neigh.	Protect Injury Risk
#138	Cottonwood	37	2.4	Tree with high crown base at 6 m	Neigh Woods	Protect Injury Risk
#139	White Willow	82	5.4	Large tree with poor crown form	Neigh Woods	Protect Woodland

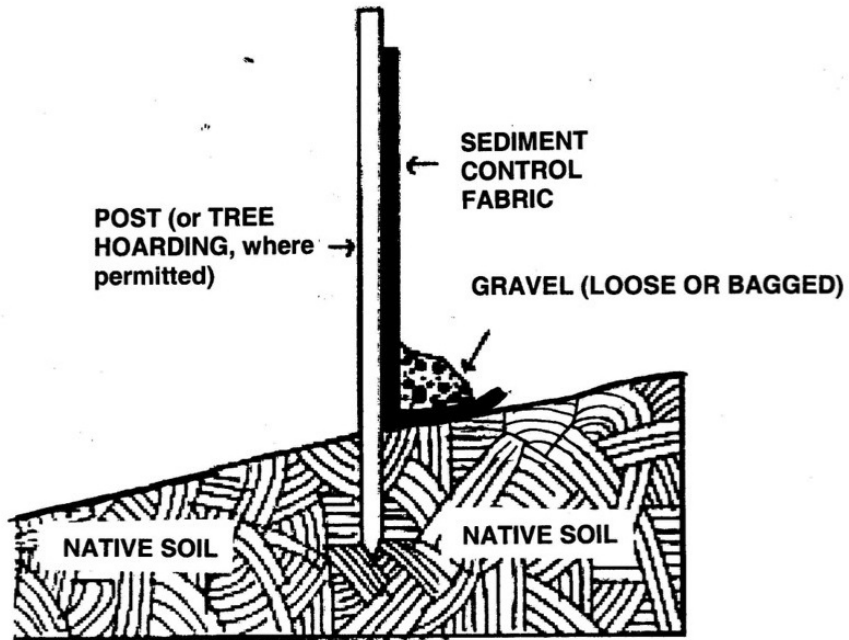
No.	Species	DBH (cm)	TPZ (m)	Comments	TC	Action
#140	Manitoba Maple	16	1.8	Tree in fair condition	Neigh Woods	Protect Woodland
#141	Cottonwood	37	2.4	Tree in fair condition	Neigh Woods	Protect Woodland
#142	Cottonwood	16	1.8	Tree in good condition	Neigh Woods	Protect Woodland
#143	Cottonwood	24	1.8	Tree in fair condition	Neigh Woods	Protect Woodland
#144+	Buckthorns	14-18	1.8	Invasive trees in fair to good condition	Neigh Woods	Remove invasive species
#145	Silver Maple	16-18	1.8	Tree near edge of site, multi-stems	Neigh.	Protect Injury Risk
#146	Silver Maple	16-27	1.8	Tree near edge of site, multi-stems	Neigh.	Protect Injury Risk
#147+	Black Locust	16-26	1.8	Trees near edge of site, multi-stems	Neigh.	Protect
#148	Russian Olive	10-15	1.2-1.8	Tree near edge of site, multi-stems	Neigh.	Protect
#149- #150	Russian Olives	5-9	1.2	Small trees in good condition	Neigh.	Protect
#151	White Pine	26	1.8	Tree near fence in poor condition, crown base at 1 m	Neigh.	Protect

6. Appendix: Tree Protection Details

1. ALL EXISTING TREES WHICH ARE TO REMAIN SHALL BE FULLY PROTECTED WITH SNOW FENCING OR SIMILAR STRUCTURES ERECTED OUTSIDE THE DRIP LINE OF THE TREES, PRIOR TO COMMENCEMENT OF CONSTRUCTION. GROUPS OF TREES AND OTHER EXISTING PLANTINGS TO BE PROTECTED SHALL BE DONE IN A LIKE MANNER WITH SNOW FENCING OR OTHER SIMILAR STRUCTURES AROUND THE ENTIRE CLUMP(S). AREAS WITHIN THE PROTECTIVE FENCING SHALL REMAIN UNDISTURBED AND SHALL NOT BE USED FOR THE STORAGE OF BUILDING MATERIALS OR EQUIPMENT.
2. NO RIGGING CABLES SHALL BE WRAPPED AROUND OR INSTALLED IN TREES AND SURPLUS SOIL, EQUIPMENT, DEBRIS OR MATERIALS SHALL NOT BE PLACED OVER THE ROOT SYSTEMS OF THE TREES WITHIN THE PROTECTIVE FENCING. NO CONTAMINANTS ARE TO BE DUMPED OR FLUSHED WHERE FEEDER ROOTS OF TREES EXIST.
3. THE CONTRACTOR SHALL TAKE EVERY PRECAUTION NECESSARY TO PREVENT DAMAGE TO TREES OR SHRUBS TO BE RETAINED.
4. WHERE LIMBS OR PORTIONS OF TREES ARE REMOVED TO ACCOMMODATE CONSTRUCTION WORK, THEY WILL BE CLEANLY CUT IN ACCORDANCE WITH ACCEPTABLE ARBORICULTURAL PRACTICES.
5. WHERE ROOT SYSTEMS OF PROTECTIVE TREES ARE EXPOSED DIRECTLY ADJACENT TO OR DAMAGED BY CONSTRUCTION WORK, THEY SHALL BE TRIMMED NEATLY AND THE AREA BACK-FILLED WITH APPROPRIATE MATERIAL IN A TIMELY MANNER TO PREVENT DRYING.
6. WHERE NECESSARY, THE TREES SHALL BE GIVEN AN OVERALL PRUNING TO RESTORE THE BALANCE BETWEEN ROOTS AND TOP GROWTH OR TO RESTORE THE APPEARANCE OF THE TREE.
7. TREES SCHEDULED FOR PRESERVATION THAT HAVE DIED OR BEEN DAMAGED BEYOND REPAIR SHALL BE REPLACED BY THE CONTRACTOR AT HIS OWN EXPENSE BY TREES OF A SIMILAR SIZE AND SPECIES OR SUCH SIZE AND SPECIES AS APPROVED BY THE LANDSCAPE ARCHITECT.
8. IF GRADES AROUND TREES TO BE PROTECTED ARE LIKELY TO CHANGE, THE CONTRACTOR SHALL BE REQUIRED TO TAKE SUCH PRECAUTIONS AS DRY WELLING AND ROOT FEEDING TO THE SATISFACTION OF THE CITY OF PICKERING.
9. SHOULD A CONFLICT OCCUR BETWEEN TREES SCHEDULED FOR PRESERVATION AND THE PROPOSED CONSTRUCTION, APPROVAL SHALL BE OBTAINED IN WRITING FROM THE CITY OF PICKERING PRIOR TO PROCEEDING WITH THE REMOVAL OF SUCH.
10. ANY TREES DESIGNATED FOR REMOVAL SHALL BE REMOVED IN ENTIRETY INCLUDING ALL STUMPS AND ROOTS AND DISPOSED OF OFF SITE. NO BURYING OF TREE BRANCHES AND STUMPS WILL BE PERMITTED.

REVISION NO.	ENGINEERING SERVICES	
SCALE		
DRAWN A. MOSTERT	TREE PRESERVATION NOTES	P.6.8
APPROVED		
DATE MARCH 2008		





**Construction Detail: SEDIMENT CONTROL FENCE
For Use Over Tree Root Zones
or Frozen Soil Conditions**

Urban Forestry Ravine & Natural Feature Protection, June 30 2010

7. References

- 1- Council of Tree Landscape Appraisers. 2019. Guide for Plant Appraisal. 10th Edition. International Society of Arboriculture.
- 2- International Society of Arboriculture of Ontario. 2022. Ontario Supplement to Guide for Plant Appraisal 10th Edition. Ontario Chapter, International Society of Arboriculture.
- 3- City of Pickering. 2022. Pickering Website. <http://www.cityofpickering.com> . Pickering Civic Complex. One The Esplanade. Pickering, ON L1V 6K7.
- 4- City of Pickering. 2003. TREE PROTECTION BY-LAW - BY-LAW NUMBER 6108/03. Corporation of the City of Pickering.
- 5- MMAH. 2005. Greenbelt Plan No. 208/2005. Feb 28, 2005. Ministry of Municipal Affairs & Housing.