

Temporary Road Closure – North Road between Hwy #7 and Enterprise Gateway.

Purpose: To facilitate the installation of a new regional sanitary sewer.

Duration: Tuesday, June 16, 2026 to Monday, August 31, 2026

Emergency vehicles will not have access.

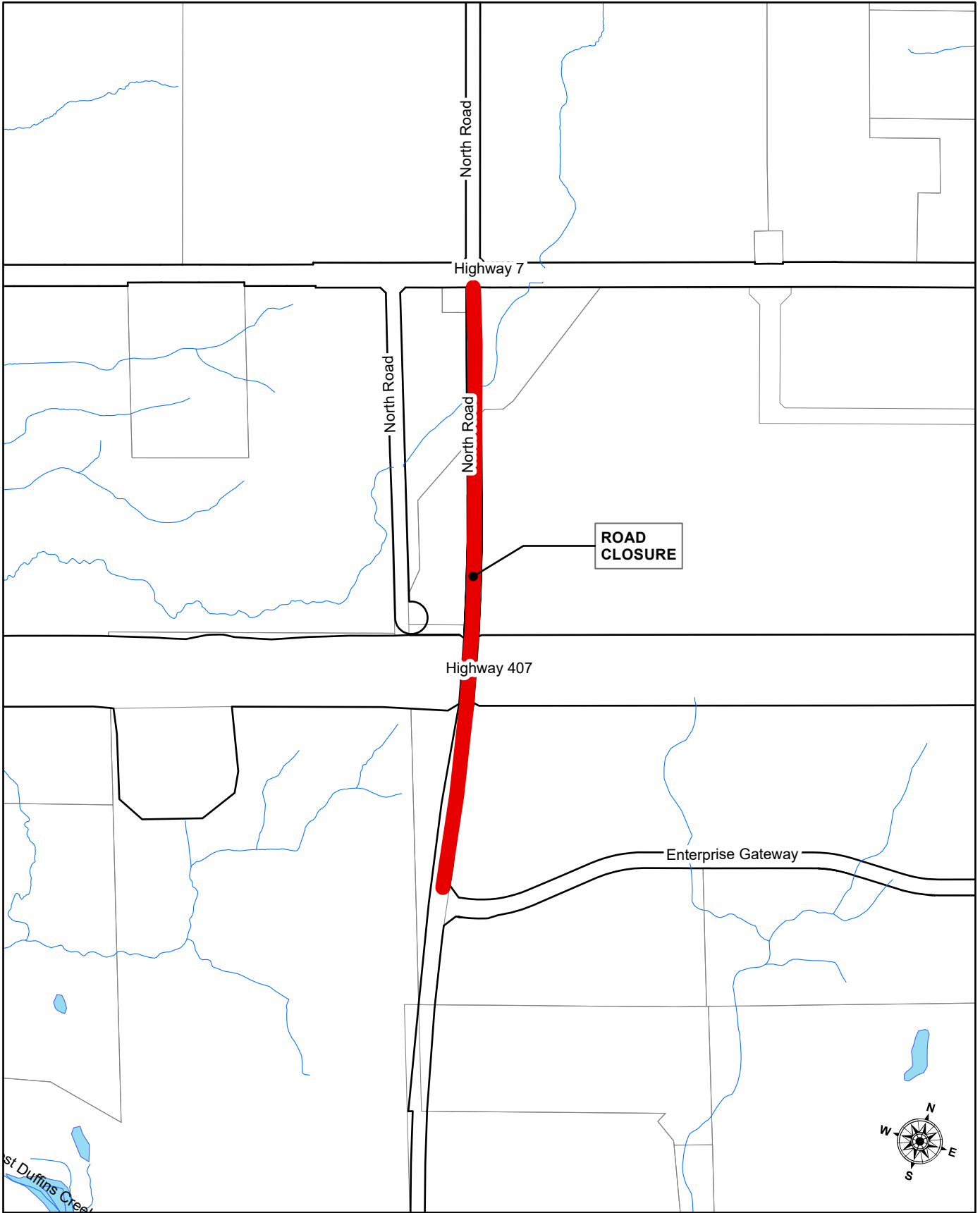
**Enterprise Gateway between White’s Road and North Road is now fully open.
North Road between Enterprise Gateway and Churchwin Street is now fully open.**

For additional information please contact:

Joe Mitschang
Supervisor, Development Inspections
Engineering Services Department
T. 905.420.4660 ext. 2030
jmitschang@pickering.ca

Michael Manion
Inspector, Development Services
Engineering Services Department
T. 905.420.4660 ext. 2124
mmanion@pickering.ca

Service Disruption Line: 1.866.278.9993
pickering.ca



Engineering Services
Department

SCALE:
1:7,500

DATE:
Jun. 12, 2026

Location Map
ROAD CLOSURE - NORTH RD
Between Highway 7 and Enterprise Gateway

City of
PICKERING