

WELCOME

2025 Ward Boundary Review City of Pickering

Process



**Review
Materials**



**Ask
Questions**



**Provide
Feedback**

**For more information, please visit
the project page:**

www.pickering.ca/wardboundaries

Please provide your feedback!

2022 Municipal Election

Status Quo Retained



Following a comprehensive Ward Boundary Review, Council determined not to modify the existing configuration.

July 2021

Petition Submitted



Petition submitted requesting Council pass a by-law to re-divide the City.

July 2021

s. 223(1), Municipal Act, 2001

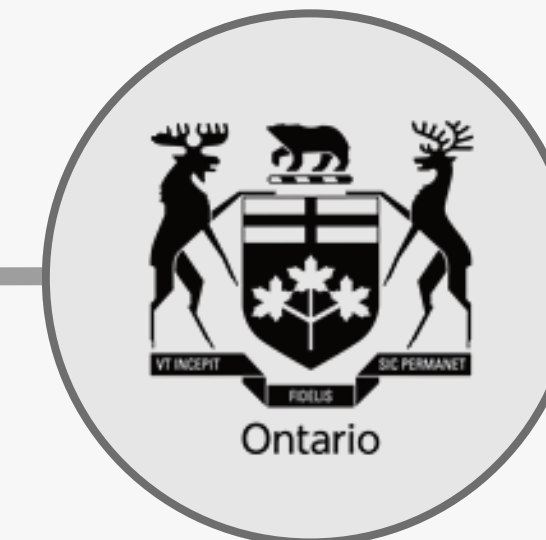
Option 2 Selected



By-law 7875/21 adopted to implement Option 2.

September 2021

OLT Appeal

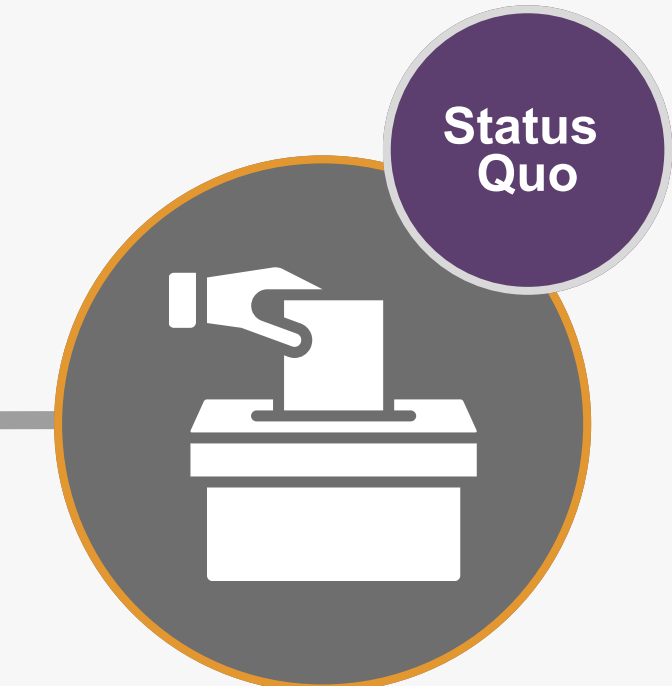


By-law 7875/21 appealed to the Ontario Land Tribunal.

November 2021

s. 222(8) iii, Municipal Act, 2001

2022 Election



Appeal not considered by December 31, 2021. As a result, the 2022 Municipal Election was run on Status Quo Boundaries.

December 2021

2026 Municipal Election

Appeal Withdrawn



Ontario Land Tribunal appeal withdrawn.

January 2022

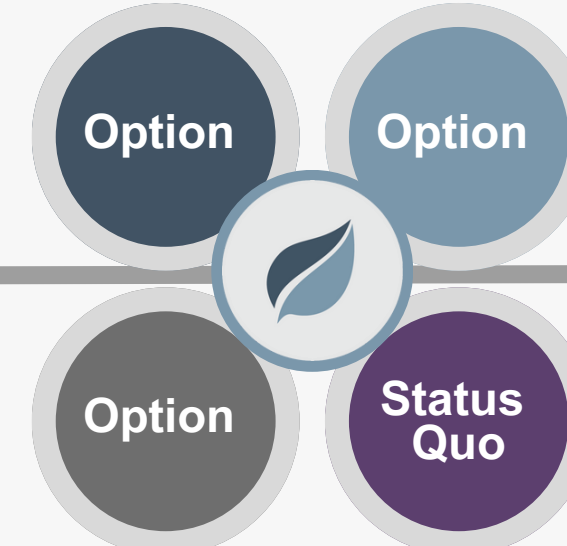
Options Reconsidered



Council directs options presented in 2021 Study be reconsidered based on available and updated data.

Winter 2025

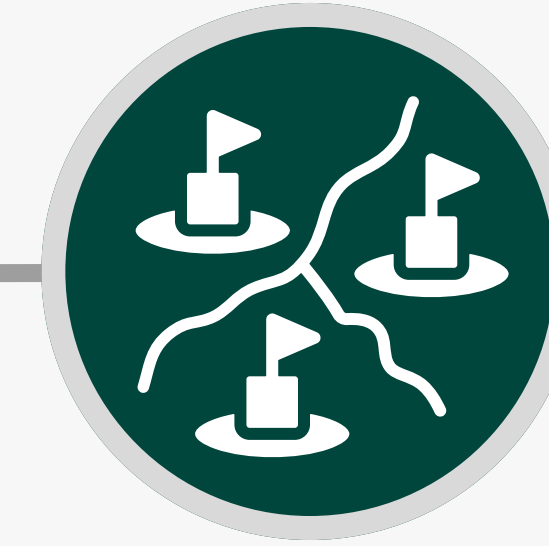
2025 Ward Boundary Review



2021 Ward Boundary Review Configurations to be reconsidered and evaluated utilizing newest data available.

Spring 2025

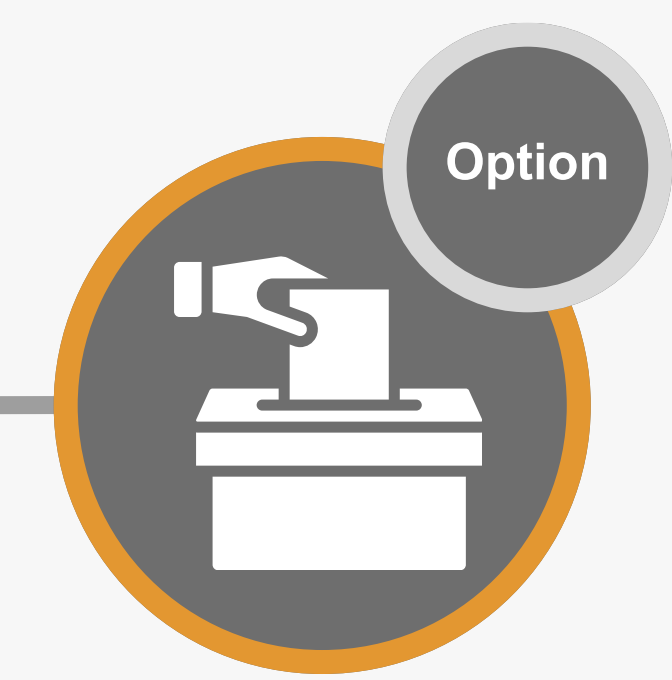
Boundary Implementation



The proposed boundaries for 2026 may be adjusted in light of updated data and the objections raised during the November 2021 appeal.

2026

2026 Election



2026 Municipal Election to run on boundaries selected as a result of this Review.

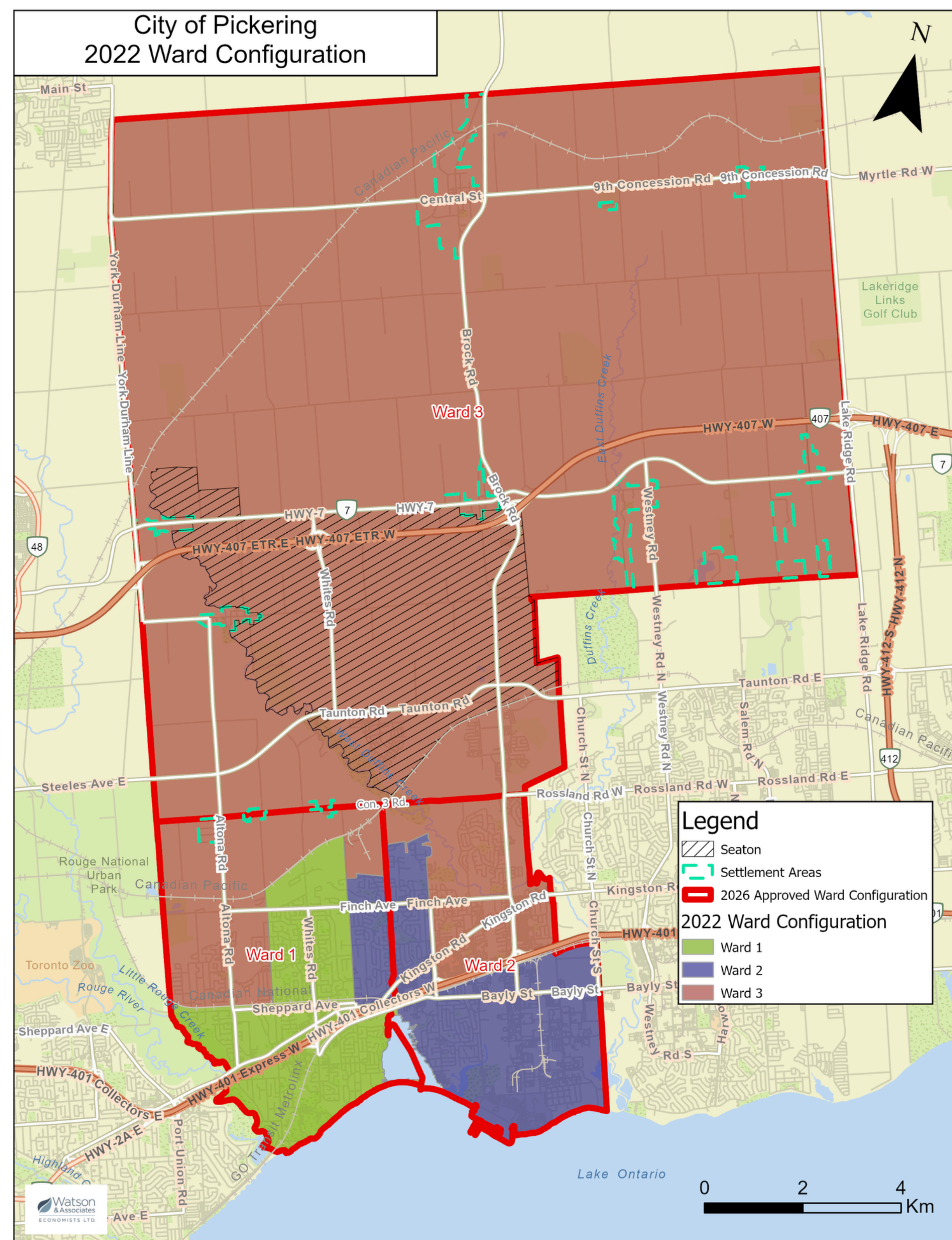
2026

City of

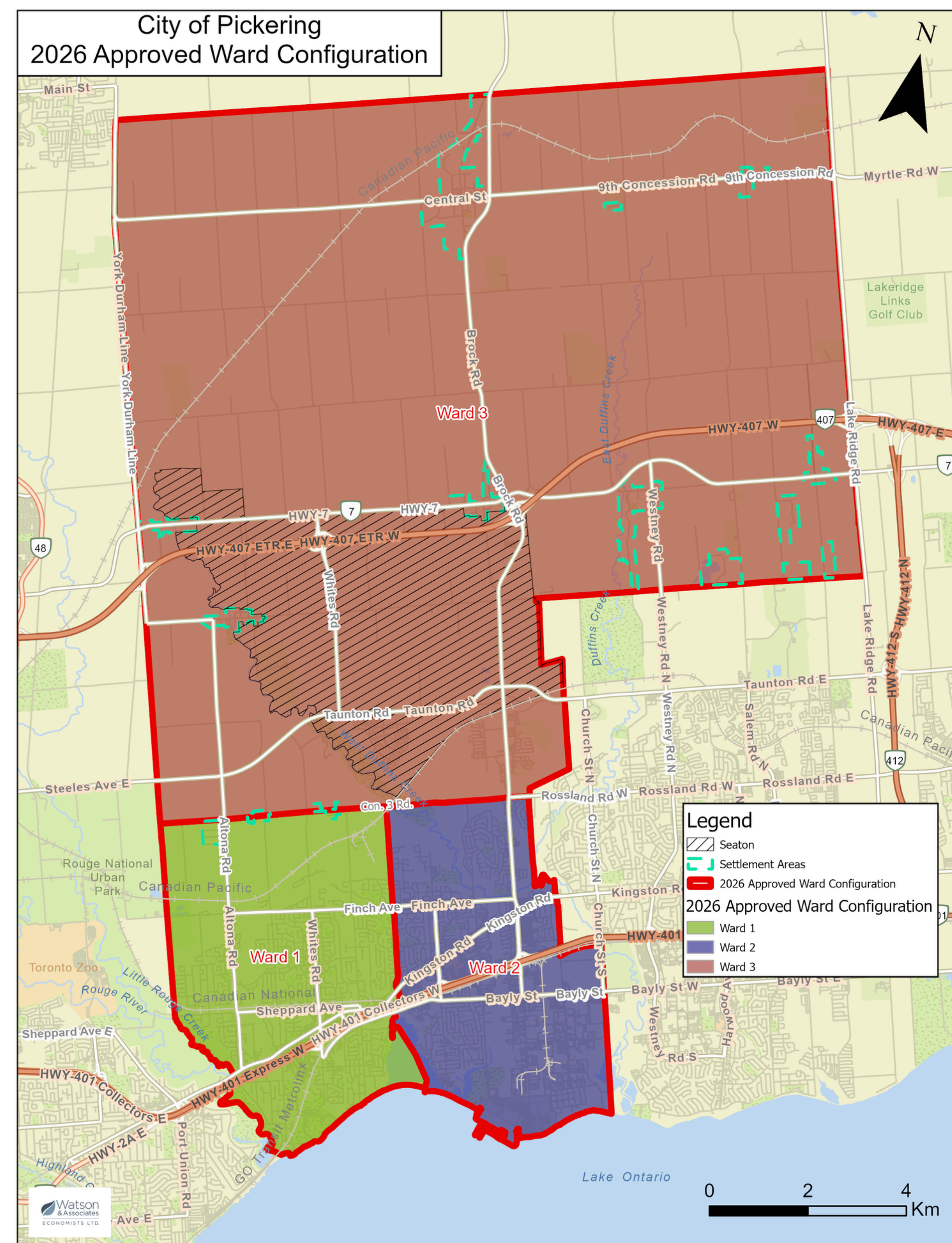
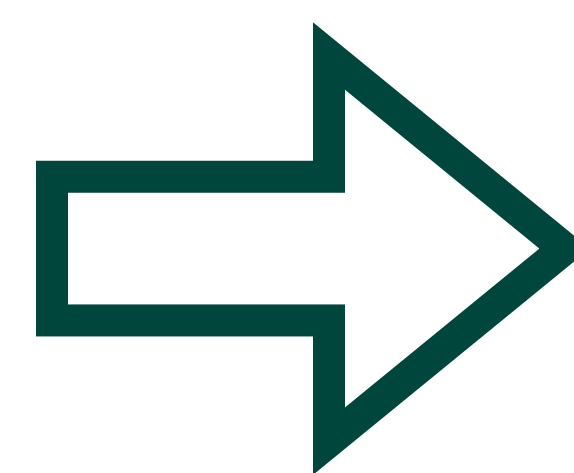
PICKERING

2025 Ward Boundary Review

www.pickering.ca/wardboundaries



2022 Ward Configuration						
Ward	2024			2035		
	Total Population	Population Variance	Optimal Range	Total Population	Population Variance	Optimal Range
Ward 1	32,580	0.83	O-	34,349	0.61	OR-
Ward 2	26,498	0.67	OR-	28,750	0.51	OR-
Ward 3	59,176	1.50	OR+	105,053	1.87	OR+
Total/Average	118,254	39,418		168,152	56,051	



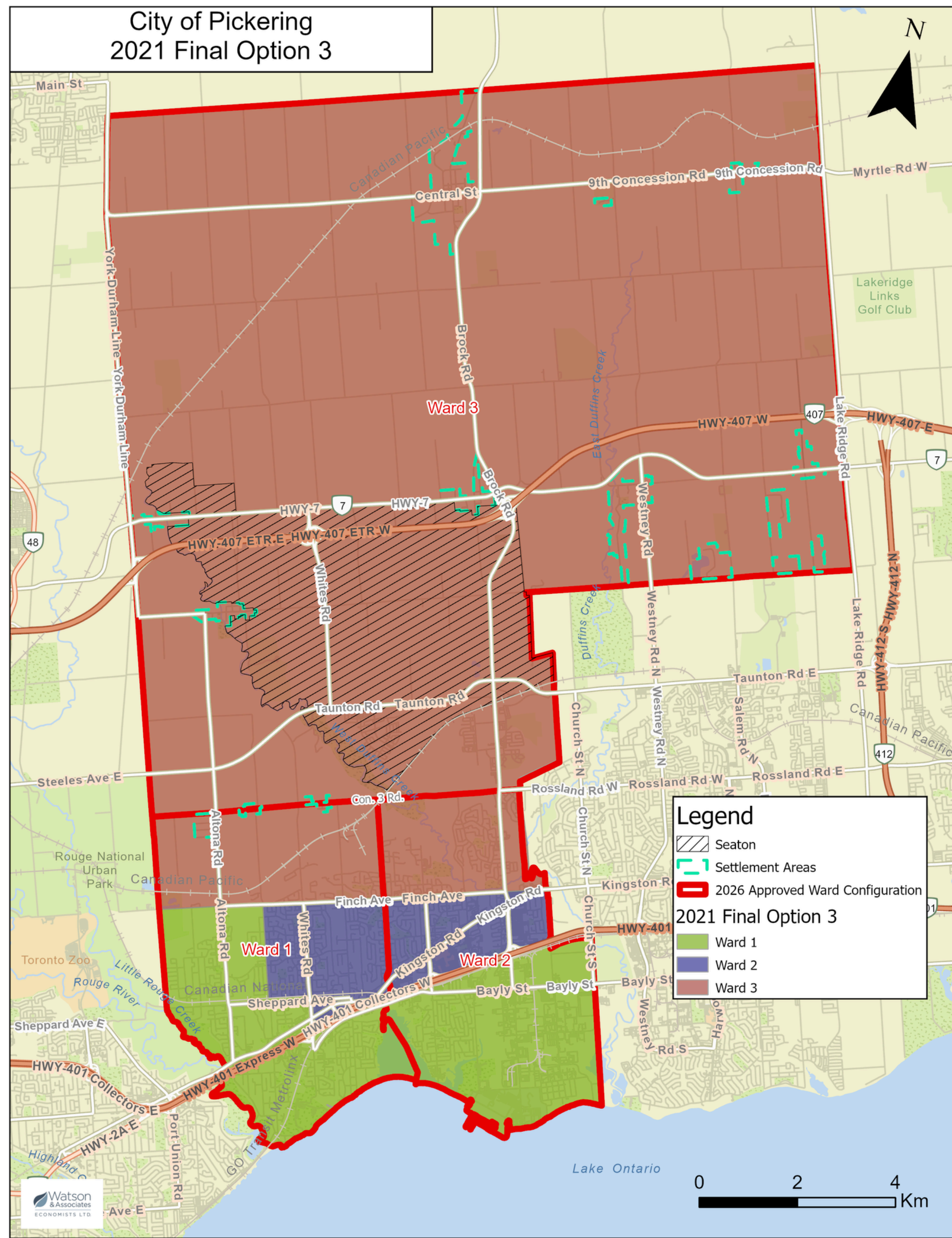
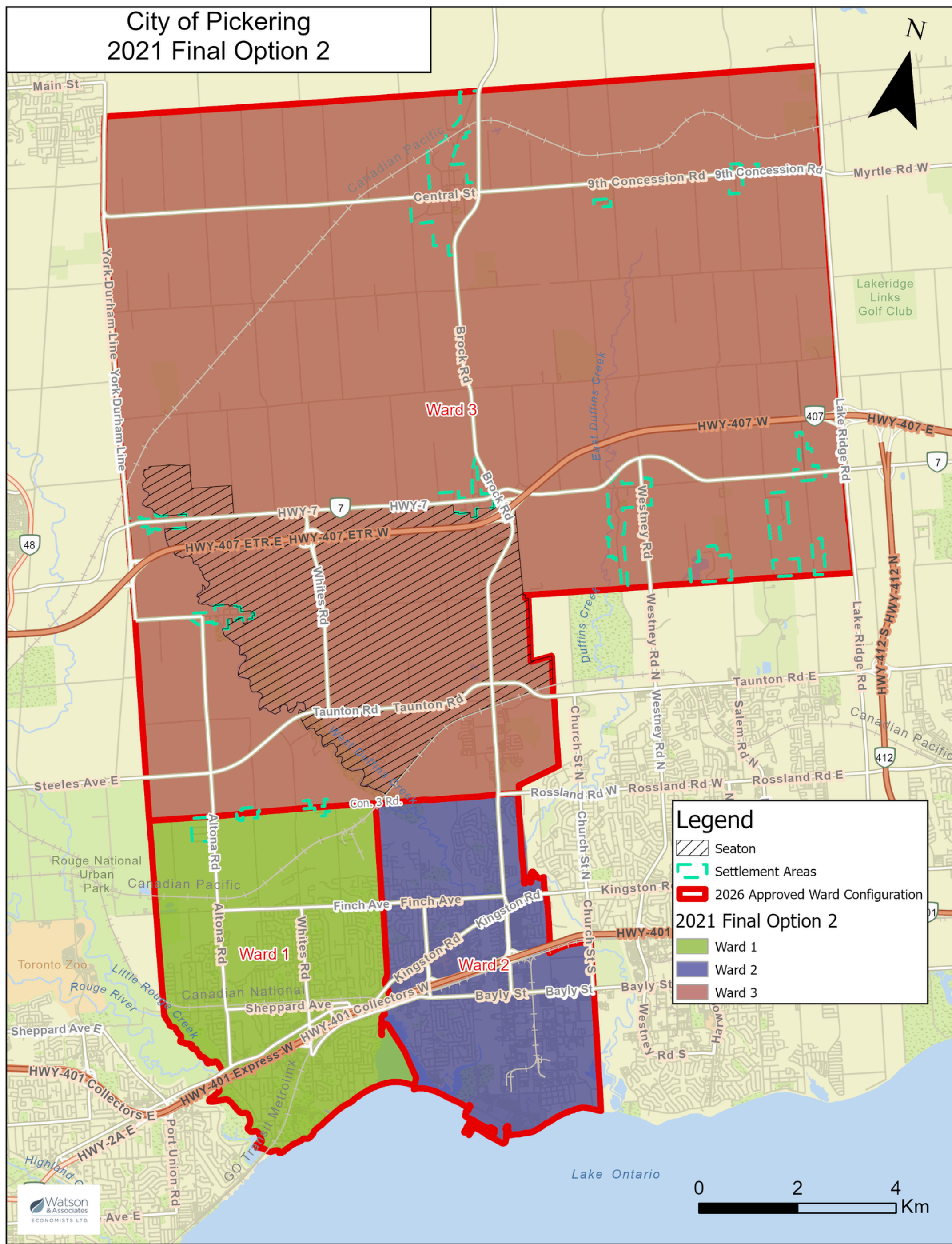
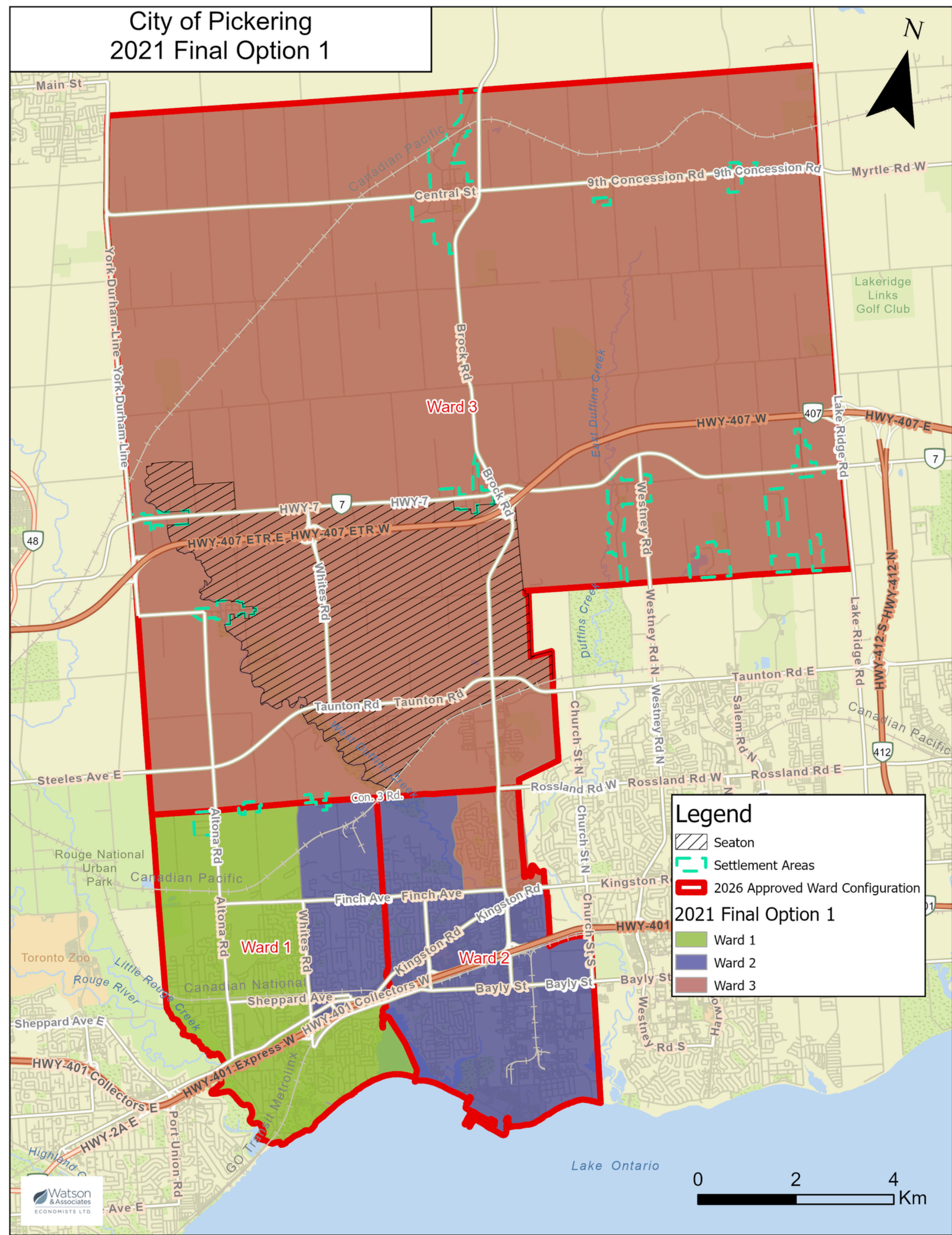
Approved Wards, 2026						
Ward	2024			2035		
	Total Population	Population Variance	Optimal Range	Total Population	Population Variance	Optimal Range
Ward 1	52,632	1.34	OR+	55,638	0.99	O
Ward 2	44,984	1.14	O+	50,094	0.89	O-
Ward 3	20,639	0.52	OR-	62,420	1.11	O+
Total/Average	118,254	39,418		168,152	56,051	

City of

PICKERING

2025 Ward Boundary Review

www.pickering.ca/wardboundaries



2021 Final Option 1						
Ward	2024			2035		
	Total Population	Population Variance	Optimal Range	Total Population	Population Variance	Optimal Range
Ward 1	37,098	0.94	O-	39,439	0.70	OR-
Ward 2	50,637	1.28	OR+	55,400	0.99	O
Ward 3	30,519	0.77	O-	73,313	1.31	OR+
Total/Average	118,254	39,418		168,152	56,051	

2021 Final Option 2						
Ward	2024			2035		
	Total Population	Population Variance	Optimal Range	Total Population	Population Variance	Optimal Range
Ward 1	52,632	1.34	OR+	55,638	0.99	O
Ward 2	44,984	1.14	O+	50,094	0.89	O-
Ward 3	20,639	0.52	OR-	62,420	1.11	O+
Total/Average	118,254	39,418		168,152	56,051	

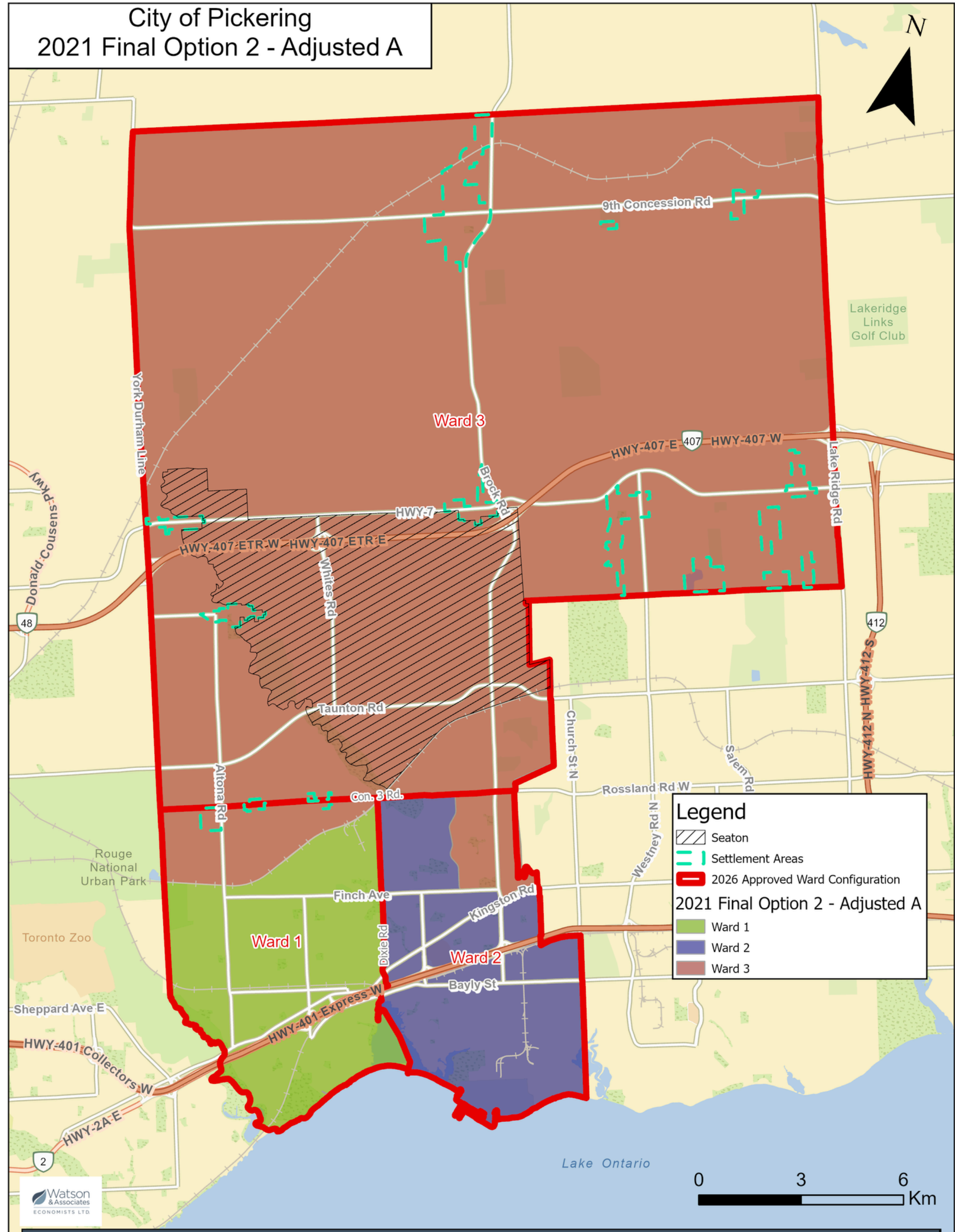
2021 Final Option 3						
Ward	2024			2035		
	Total Population	Population Variance	Optimal Range	Total Population	Population Variance	Optimal Range
Ward 1	39,566	1.00	O	42,403	0.76	O-
Ward 2	38,816	0.98	O	42,323	0.76	O-
Ward 3	39,872	1.01	O	83,426	1.49	OR+
Total/Average	118,254	39,418		168,152	56,051	

City of

PICKERING

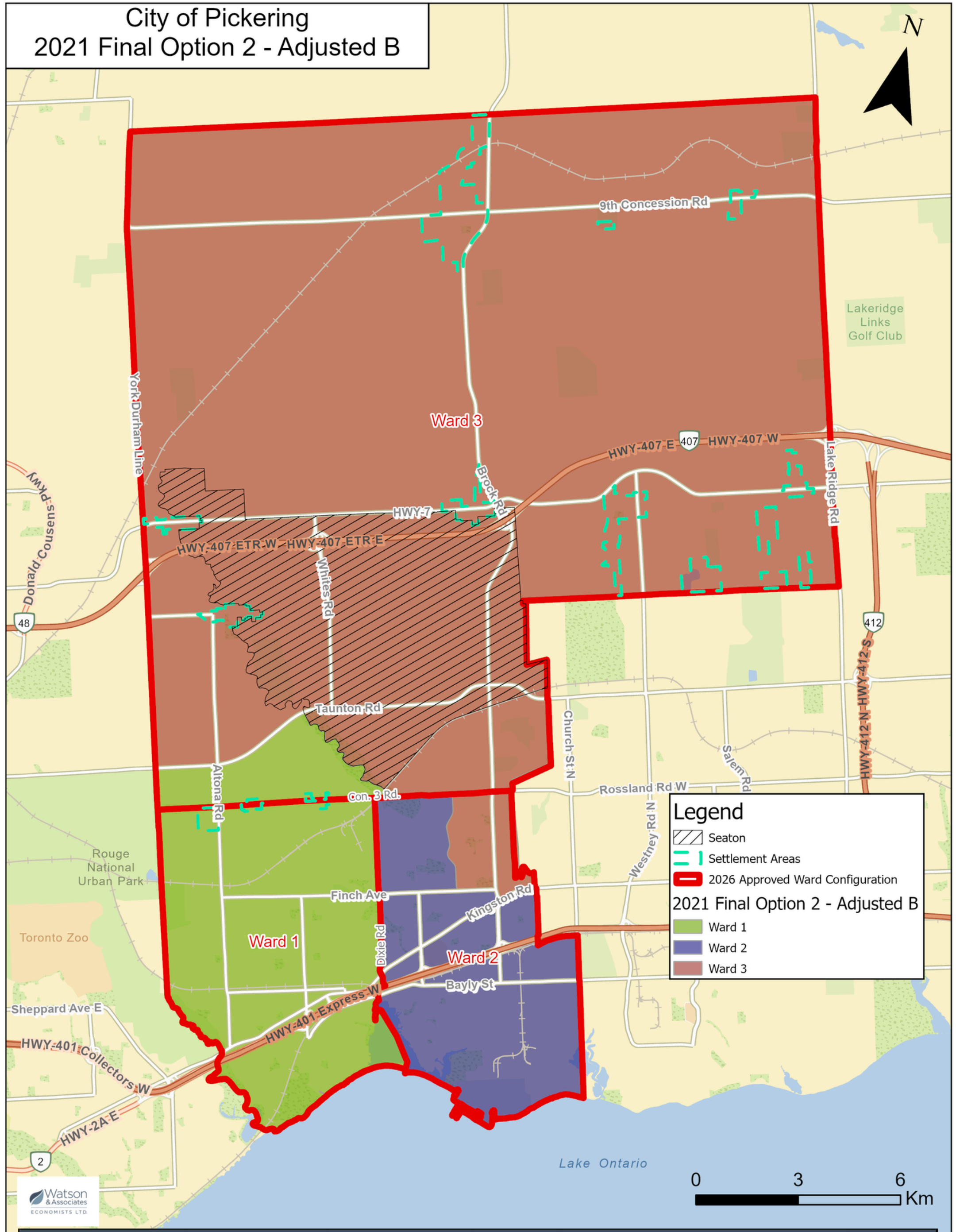
2025 Ward Boundary Review

www.pickering.ca/wardboundaries



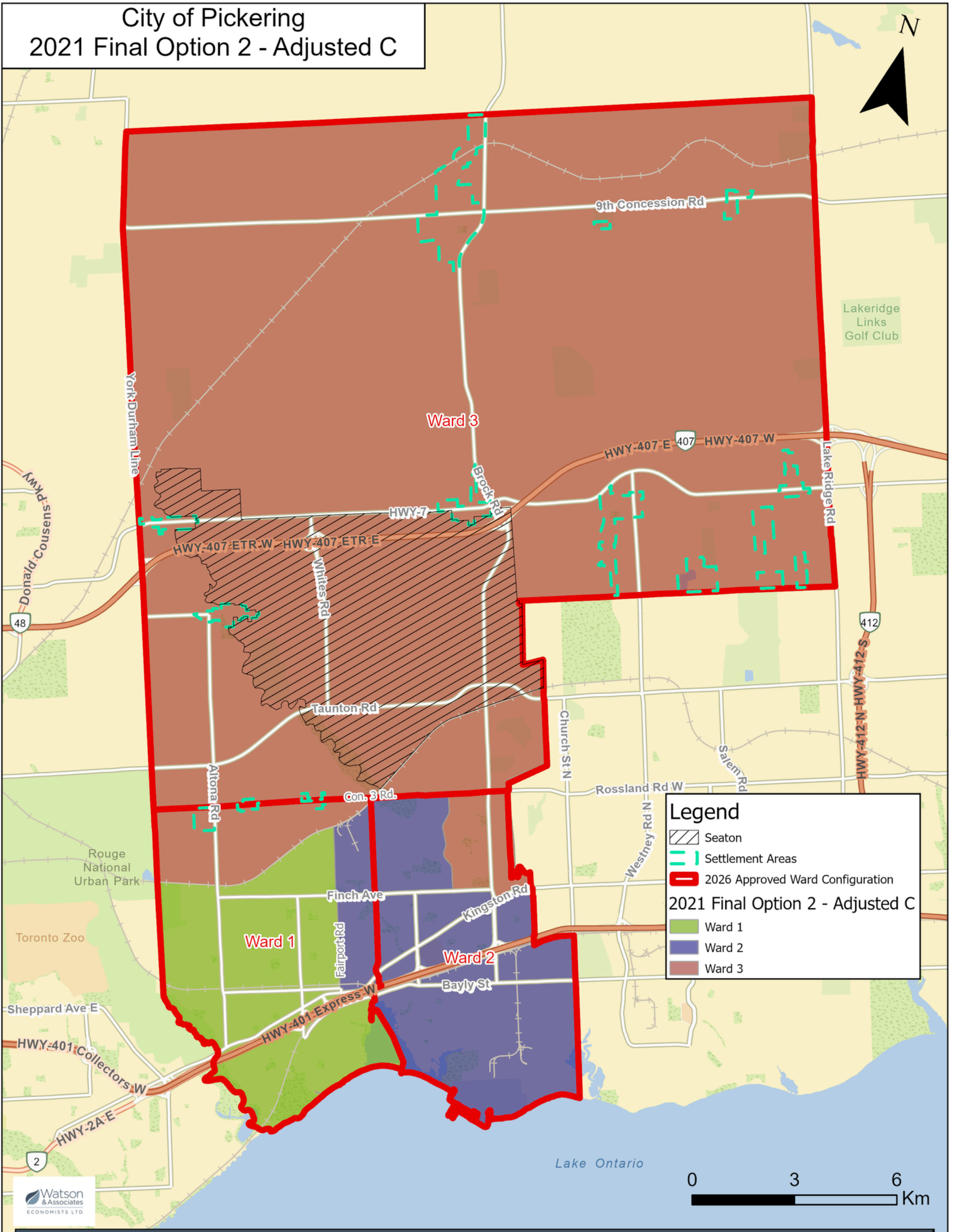
2021 Final Option 2 - Adjusted A						
Ward	2024			Total Population	2035	
	Total Population	Population Variance	Optimal Range		Population Variance	Optimal Range
Ward 1	52,255	1.33	OR+	55,254	0.99	O
Ward 2	35,104	0.89	O-	39,201	0.70	OR-
Ward 3	30,896	0.78	O-	73,697	1.31	OR+
Total/Average	118,254	39,418		168,152	56,051	

- Adjusted Ward1/3 line south to the rail (Cherrywood captured in Ward 3) to address Community of Interests.
- Brock Road community adjusted from Ward 2 to Ward 3 for more balanced short term population parity.



2021 Final Option 2 - Adjusted B						
Ward	2024			Total Population	2035	
	Total Population	Population Variance	Optimal Range		Population Variance	Optimal Range
Ward 1	52,713	1.34	OR+	55,720	0.99	O
Ward 2	35,104	0.89	O-	39,201	0.70	OR-
Ward 3	30,437	0.77	O-	73,231	1.31	OR+
Total/Average	118,254	39,418		168,152	56,051	

- Adjusted Ward1/3 line north to the Taunton Rd alternative (Cherrywood captured in Ward 1) to address Community of Interests.
- Brock Road community adjusted from Ward 2 to Ward 3 for more balanced short term population parity.



2021 Final Option 2 - Adjusted C						
Ward	2024			Total Population	2035	
	Total Population	Population Variance	Optimal Range		Population Variance	Optimal Range
Ward 1	44,633	1.13	O+	47,267	0.84	O-
Ward 2	42,726	1.08	O+	47,188	0.84	O-
Ward 3	30,896	0.78	O-	73,697	1.31	OR+
Total/Average	118,254	39,418		168,152	56,051	

- Adjusted Ward1/3 line south to the rail (Cherrywood captured in Ward 3) to address Community of Interests.
- Brock Road community adjusted from Ward 2 to Ward 3 for more balanced short term population parity.
- East/West boundary between W1/W2 adjusted east from Dixie to Fairport (as seen in the 2022 ward configuration) to balance the urban ward populations.

2025 Evaluations

Configuration	Representation by Population	Current and Future Population Trends	Protection of Communities of Interests and Neighbourhoods	Physical Features as Natural Boundaries	Effective Representation
2022 Ward Configuration	No	No	No	Partially Successful	No
2021 Final Option 1	No	Largely Successful	Largely Successful	Yes	Largely Successful
2021 Final Option 2 (Approved 2026 Configuration)	No	Yes	Largely Successful	Yes	Yes
2021 Final Option 3	Yes	No	Largely Successful	Largely Successful	Largely Successful
2021 Final Option 2 - Adjusted Option A	Partially Successful	No	Yes	Yes	Largely Successful
2021 Final Option 2 - Adjusted Option B	Partially Successful	No	Yes	Yes	Largely Successful
2021 Final Option 2 - Adjusted Option C	Yes	Partially Successful	Yes	Yes	Yes

Revised evaluation