

## Service Announcement

### Notice of Temporary Road and Sidewalk Closure

---

The temporary road closure of Glenanna Road, from the south of Kingston Road to the entrance of the Health Services Centre, approximately 60 metres north of The Esplanade North intersection. In addition, the east sidewalk from the north limit of The Esplanade North to the entrance of the Health Services Centre, approximately 100 metres south of Kingston Road, and the west sidewalk of Glenanna Road from Pickering Parkway to The Esplanade South will remain closed. Both vehicle and pedestrian detours have been provided, and all applicable signage will be provided.

**Purpose:** To facilitate the Installation of the Region of Durham's watermain.

**Duration:** Thursday, July 2, 2026 to Thursday, July 16, 2026

---

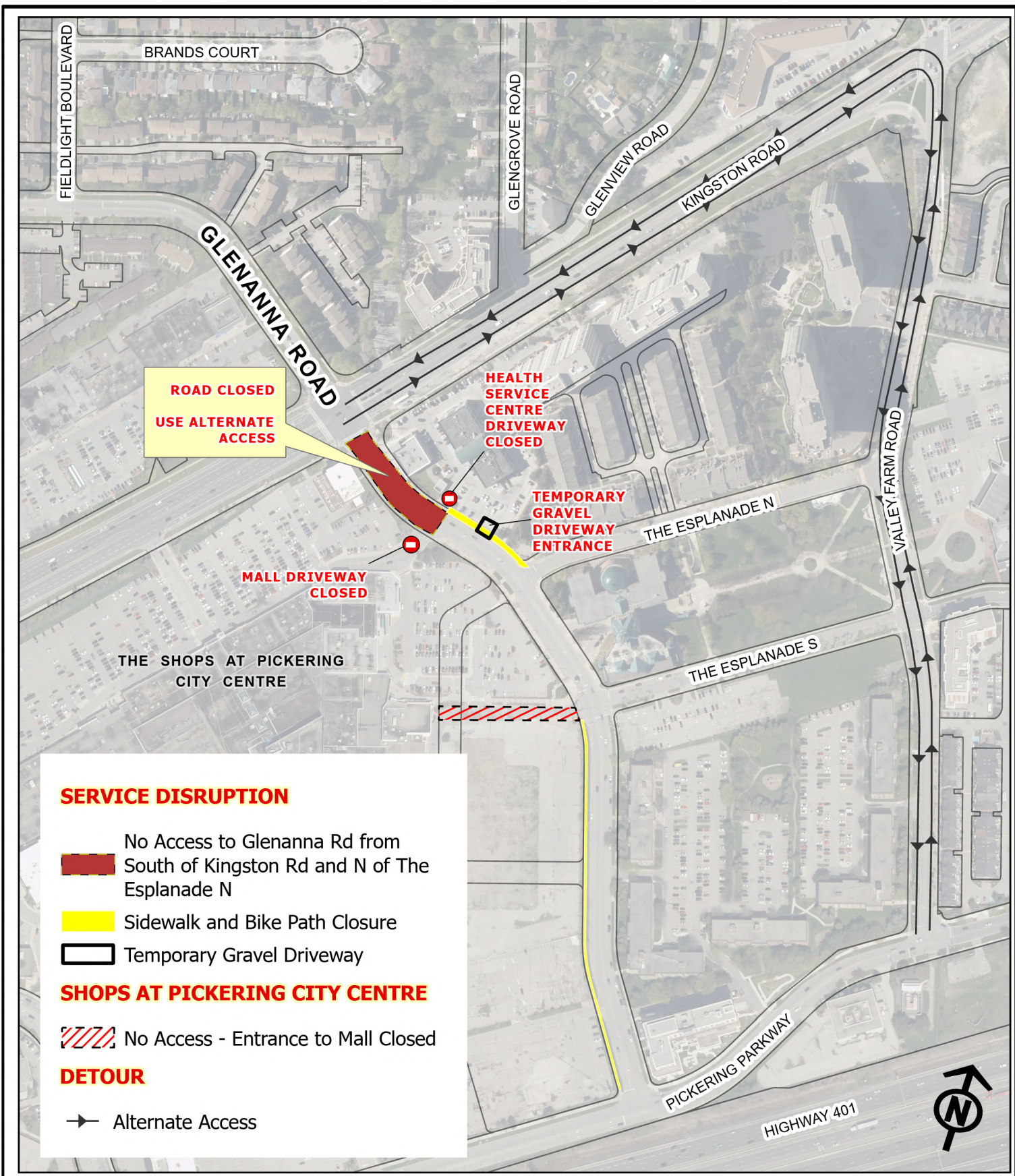
**Access to the Health Services Centre will be provided through a temporary gravel driveway near the south end of the closure (see map).**

**For additional information please contact:**

Ajay Gnanaraj  
Inspector, Development Services  
Engineering Services Department  
T. 905.420.4660 ext. 2077  
[agnanaraj@pickering.ca](mailto:agnanaraj@pickering.ca)

Joe Mitschang  
Supervisor, Development Services  
Engineering Services Department  
T. 905.420.4660 ext. 2030  
[jmitschang@pickering.ca](mailto:jmitschang@pickering.ca)

**Service Disruption Line:** 1.866.278.9993



Engineering Services Department	
SCALE: 1:4,000	DATE: Jun. 29, 2026

**LOCATION MAP**  
**NOTICE OF CONSTRUCTION**  
 GLENANNA ROAD CLOSURE FOR  
 REGION OF DURHAM WATERMAIN INSTALLATION

